

WAAS CH 63224 W07A	APP CRS 072°	Rwy Ldg TDZE 2653 Apt Elev 2653	4299
--	------------------------	---	-------------

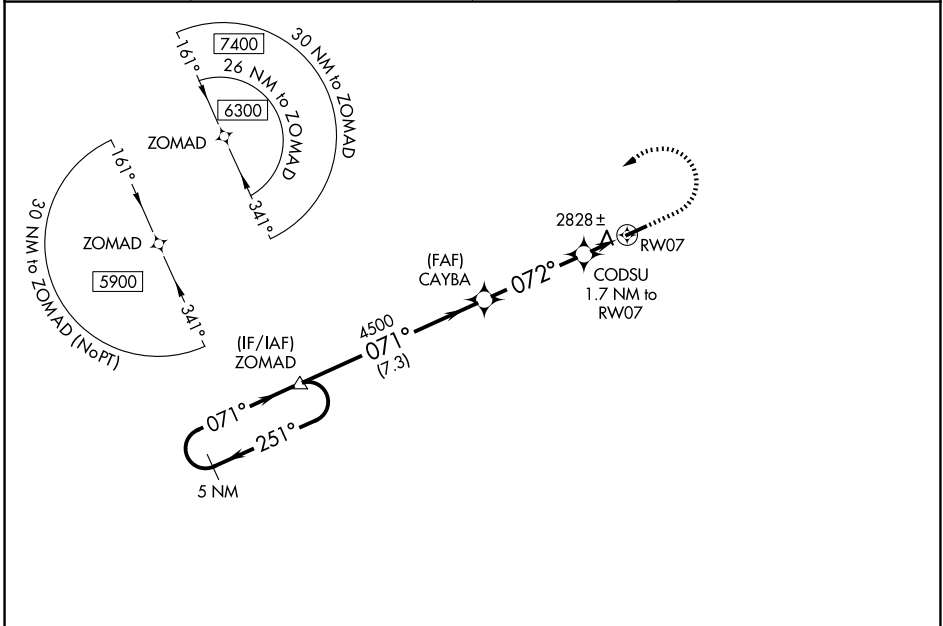
RNAV (GPS) RWY 7

TAZEWELL COUNTY (JF'Z)

▼ DME/DME RNP-0.3 NA. Visibility reduction by helicopters NA. When local altimeter setting not received, use Wise altimeter setting and increase all MDA 100 feet, increase LP and LNAV Cat C visibility 1/4 mile and Circling Cat C visibility 1/2 mile. Procedure NA at night. Circling NA for Cat C south of Rwy 7-25.

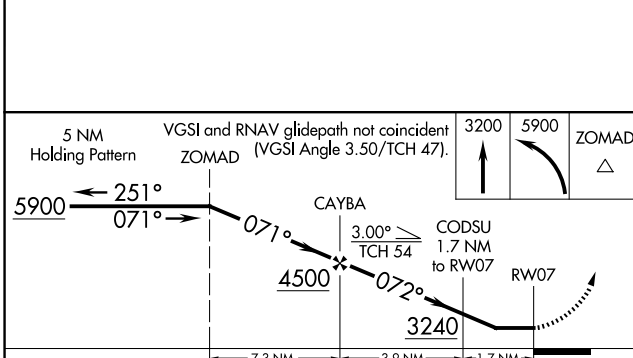
MISSED APPROACH: Climb to 3200 then climbing left turn to 5900 direct ZOMAD and hold, continue climb-in-hold to 5900.

AWOS-3 118.075	ATLANTA CENTER 127.85 269.3	GCO 135.075	UNICOM 123.05 (CTAF) 0
--------------------------	---------------------------------------	-----------------------	----------------------------------



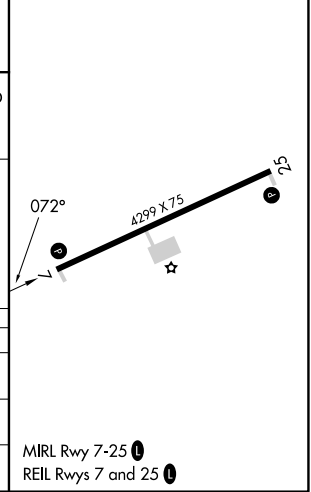
NE-3, 16 APR 2026 to 14 MAY 2026

NE-3, 16 APR 2026 to 14 MAY 2026



ELEV 2653	TDZE 2653
------------------	------------------

CATEGORY	A	B	C	D
LP MDA	3080-1	427 (500-1)	3080-1 1/4 427 (500-1 1/4)	NA
LNAV MDA	3080-1	427 (500-1)	3080-1 1/4 427 (500-1 1/4)	NA
CIRCLING	3240-1	587 (600-1)	3240-1 1/2 587 (600-1 1/2)	NA



MIRL Rwy 7-25 0
REIL Rwy 7 and 25 0