

WAAS CH <b>48929</b> W15A	APP CRS <b>148°</b>	Rwy Idg TDZE <b>345</b> Apt Elev <b>345</b>	<b>2997</b>
---------------------------------	------------------------	---	-------------

# RNAV (GPS) RWY 15

OXFORD COUNTY RGNL (81B)

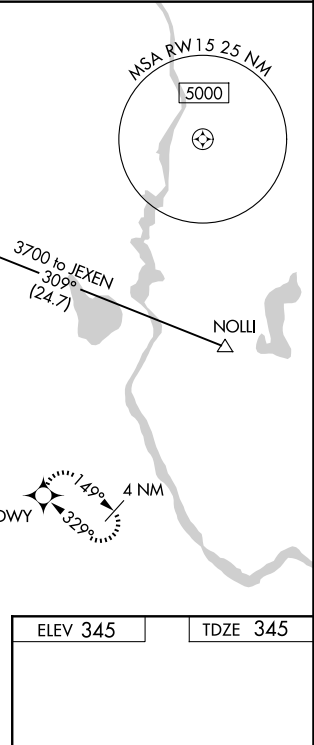
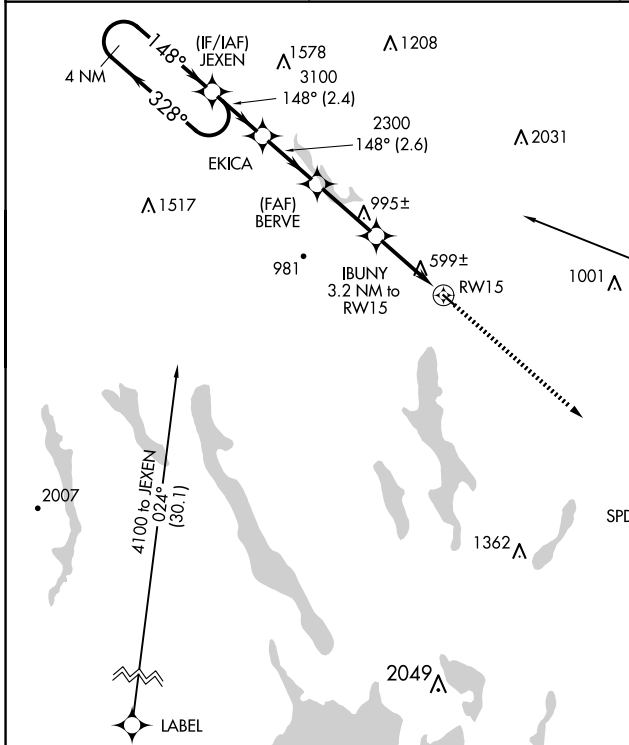
**NA** DME/DME RNP-0.3 NA. Procedure NA at night. Use Auburn/Lewiston altimeter setting; when not received, use Fryeburg altimeter setting and increase all MDAs 40 feet. Helicopter visibility reduction below 1 SM NA.

**MISSED APPROACH:** Climb to 3600 direct SPDWY and hold, continue climb-in-hold to 3600.

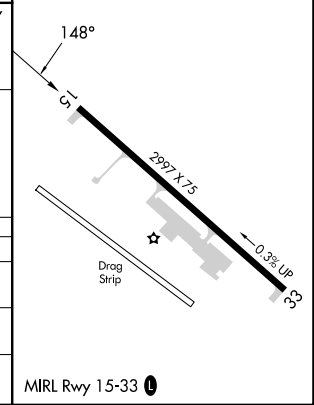
LEW AWOS-3  
**118.025**

PORTLAND APP CON ★  
**125.5 353.9**

UNICOM  
**122.8 (CTAF) 0**



CATEGORY	A	B	C	D
LP MDA	900-1	555 (600-1)		NA
LNVA MDA	1140-1 795 (800-1)	1140-1¼ 795 (800-1¼)		NA
CIRCLING	1220-1¼ 875 (900-1¼)	1400-1½ 1055 (1100-1½)		NA



NE-1, 16 APR 2026 to 14 MAY 2026

NE-1, 16 APR 2026 to 14 MAY 2026