

WAAS CH 65723 W34A	APP CRS 337°	Rwy ldg TDZE 526 Apt Elev 533	3008
--	------------------------	---	-------------

RNAV (GPS) RWY 34

DEXTER RGNL (1B)

Procedure NA at night. DME/DME RNP-0.3 NA. Use Bangor altimeter setting, when not received, use Augusta altimeter setting and increase all MDA 40 feet.

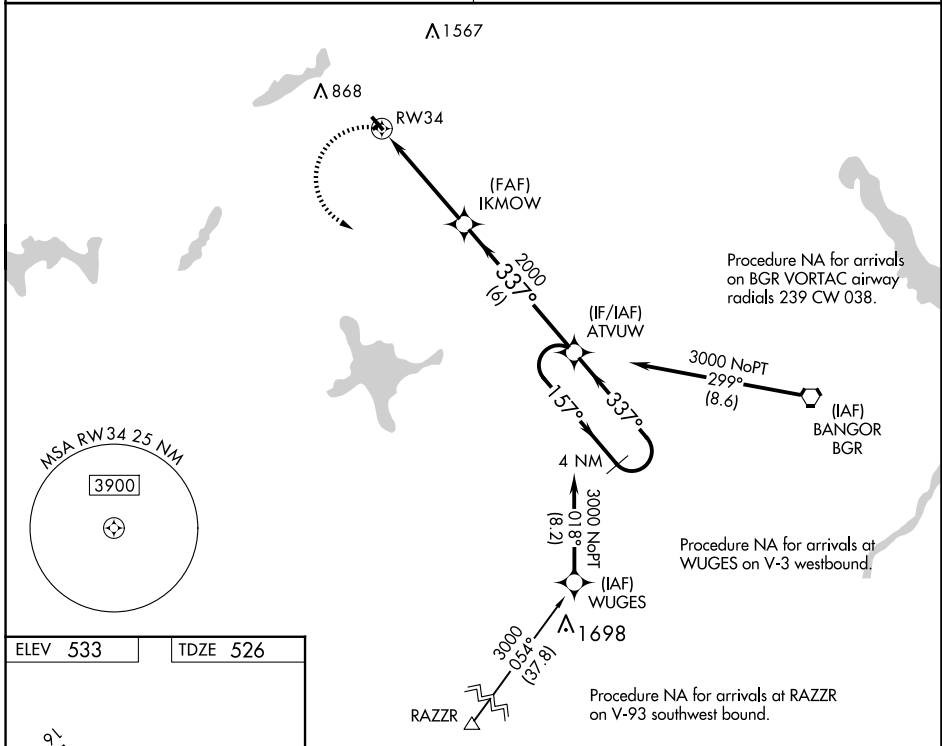
Procedure NA for arrivals on BGR VORTAC airway radials 239 CW 038.

Procedure NA for arrivals at WUGES on V-3 westbound.

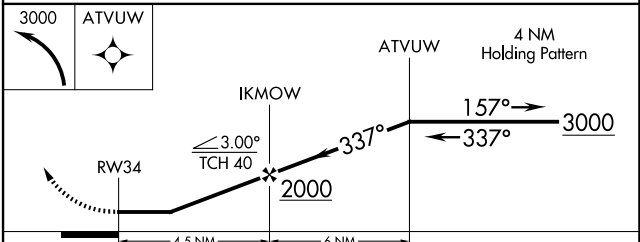
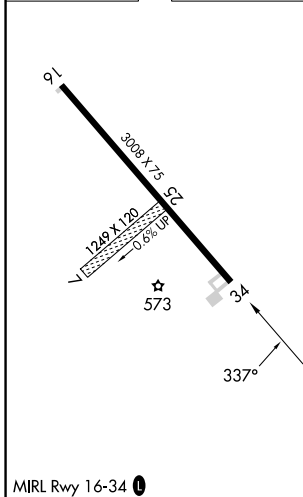
Procedure NA for arrivals at RAZZR on V-93 southwest bound.

MISSED APPROACH: Climbing left turn to 3000 direct ATVUW and hold.

BANGOR APP CON 118.925 239.3	UNICOM 122.8 (CTAF) 1
--	---------------------------------



ELEV 533	TDZE 526
----------	----------



CATEGORY	A	B	C	D
LP MDA	980-1	454 (500-1)	NA	
LNAV MDA	1140-1	614 (700-1)	NA	
CIRCLING	1220-1 687 (700-1)	1360-1¼ 827 (900-1¼)	NA	

NE-1, 16 APR 2026 to 14 MAY 2026

NE-1, 16 APR 2026 to 14 MAY 2026