

WAAS CH <b>81834</b> <b>W32A</b>	APP CRS <b>325°</b>	Rwy Ldg TDZE <b>1819</b> Apt Elev <b>1823</b>
--	------------------------	---

# RNAV (GPS) RWY 32

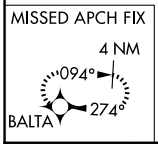
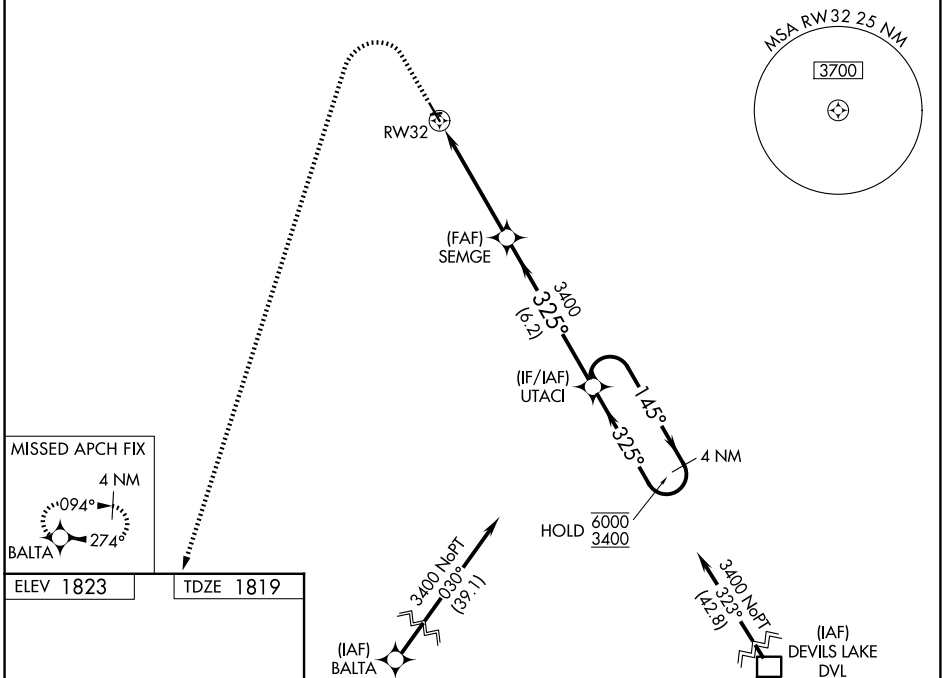
ROLLA MUNI/LEONARD KRECH FLD (Ø6D)

**RNP APCH - GPS.**

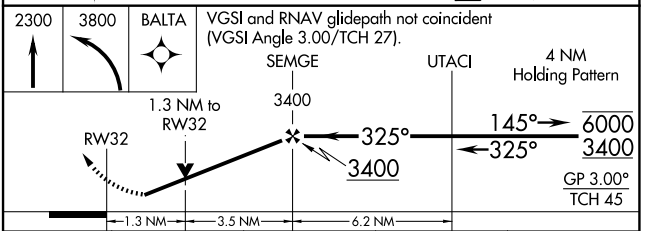
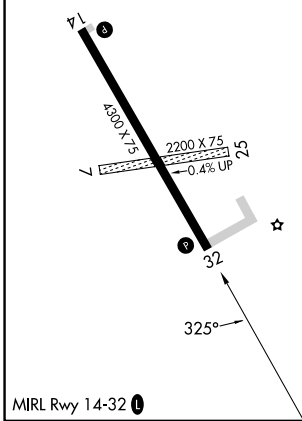
**⚠** Circling NA to Rwy 7 and 25. Circling Rwy 14 NA at night. Baro-VNAV and VDP NA when using Cando Muni altimeter setting. Rwy 32 helicopter visibility reduction below ¼ SM NA. For uncompensated Baro-VNAV systems, LNAV/VNAV NA below -18°C or above 54°C. When local altimeter setting not received, use Cando altimeter setting: increase LPV DA to 2183 feet; increase LNAV/VNAV DA to 2286 feet and all visibilities ¾ SM; increase all MDAs 120 feet and LNAV visibility Cat C/D ¾ SM, and Circling visibility Cat C/D ½ SM.

**MISSED APPROACH:** Climb to 2300 then climbing left turn to 3800 direct BALTA and hold.

AWOS-3 <b>118.125</b>	MINNEAPOLIS CENTER <b>127.6 279.6</b>	UNICOM <b>122.8 (CTAF) 0</b>
--------------------------	--	---------------------------------



ELEV 1823	TDZE 1819
-----------	-----------



CATEGORY	A	B	C	D
LPV DA		2069-1	250 (300-1)	
LNAV/VNAV DA		2162-1	343 (400-1)	
LNAV MDA	2260-1	441 (500-1)	2260-1 3/8	441 (500-1 3/8)
CIRCLING	2260-1 437 (500-1)	2340-1 517 (600-1)	2560-2 737 (800-2)	2700-2 3/4 877 (900-2 3/4)

NC-1, 16 APR 2026 to 14 MAY 2026

NC-1, 16 APR 2026 to 14 MAY 2026