

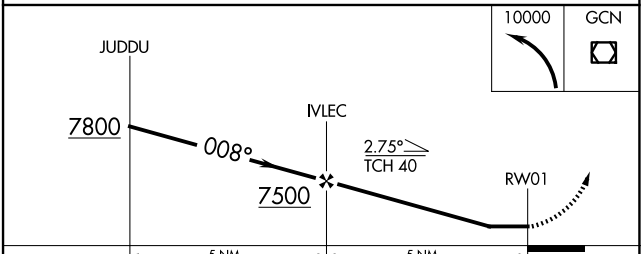
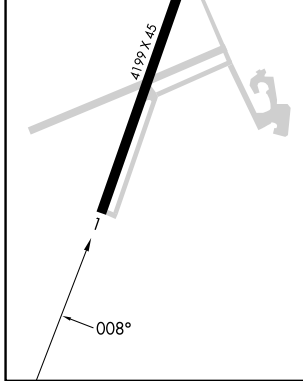
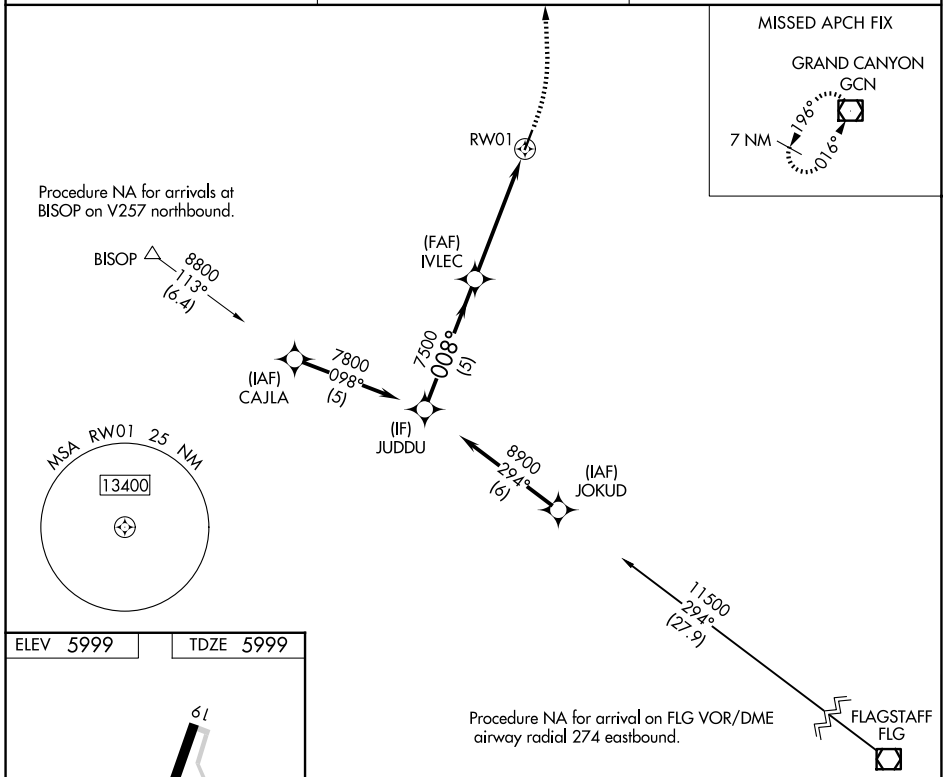
APP CRS 008°	Rwy Ldg 4199
	TDZE 5999
	Apt Elev 5999

RNAV (GPS) RWY 1

VALLE (40G)

RNP APCH.
 Procedure NA at night. Rwy 1 helicopter visibility reduction below 1 SM NA. Use Grand Canyon Ntl Park altimeter setting; when not received, procedure NA.
 MISSED APPROACH: Climbing left turn to 10000 direct GCN VOR/DME and hold.

GCN ASOS 124.3	LOS ANGELES CENTER 124.85 319.2	UNICOM 122.8 (CTAF)
--------------------------	---	-------------------------------



CATEGORY	A	B	C	D
LNAV MDA	6620-1	621 (700-1)	6620-1 $\frac{3}{4}$ 621 (700-1 $\frac{3}{4}$)	NA
CIRCLING	6620-1 621 (700-1)	6640-1 641 (700-1)	6640-1 $\frac{3}{4}$ 641 (700-1 $\frac{3}{4}$)	NA

SW-4, 16 APR 2026 to 14 MAY 2026

SW-4, 16 APR 2026 to 14 MAY 2026