

WAAS CH 97408 W23A	APP CRS 225°	Rwy Idg TDZE Apt Elev	5502 18 18
--	------------------------	-----------------------------	---------------------------------------

RNAV (GPS) RWY 23

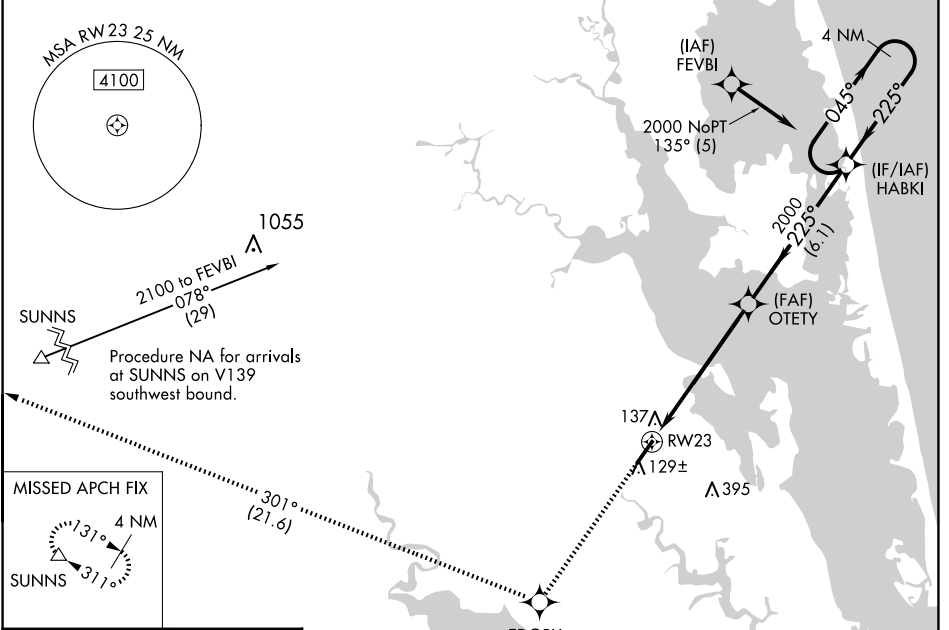
CURRITUCK COUNTY RGNL (ONX)

RNP APCH.

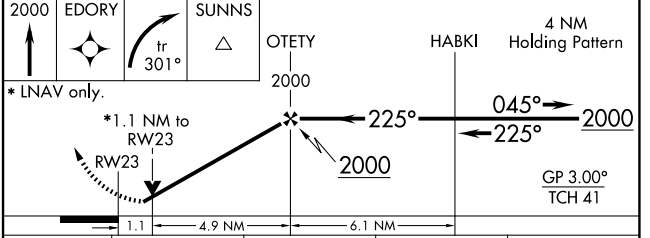
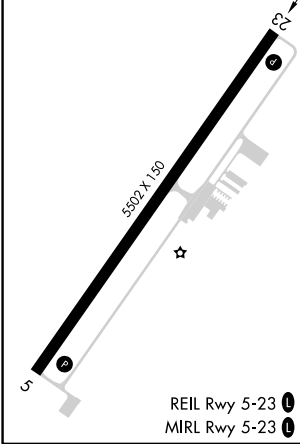
▼ For uncompensated Baro-VNAV systems, LNAV/VNAV NA below -15°C (5°F) or above 49°C (120°F). Rwy 23 helicopter visibility reduction below $\frac{3}{4}$ SM NA.

▲ MISSED APPROACH: Climb to 2000 direct EDORY and right turn on track 301° to SUNNS and hold.

AWOS-3 119.775	OCEANA APP CON 123.9 266.8	CTAF 122.9 0
--------------------------	--------------------------------------	------------------------



ELEV 18	TDZE 18
---------	---------



CATEGORY	A	B	C	D
LPV DA		384-1¼	366 (400-1¼)	
LNAV/VNAV DA		424-1½	406 (500-1½)	
LNAV MDA	400-1	382 (400-1)	400-1¼	382 (400-1¼)
CIRCLING	440-1 422 (500-1)	480-1 462 (500-1)	480-1½ 462 (500-1½)	760-2½ 742 (800-2½)

SE-2, 16 APR 2026 to 14 MAY 2026

SE-2, 16 APR 2026 to 14 MAY 2026