

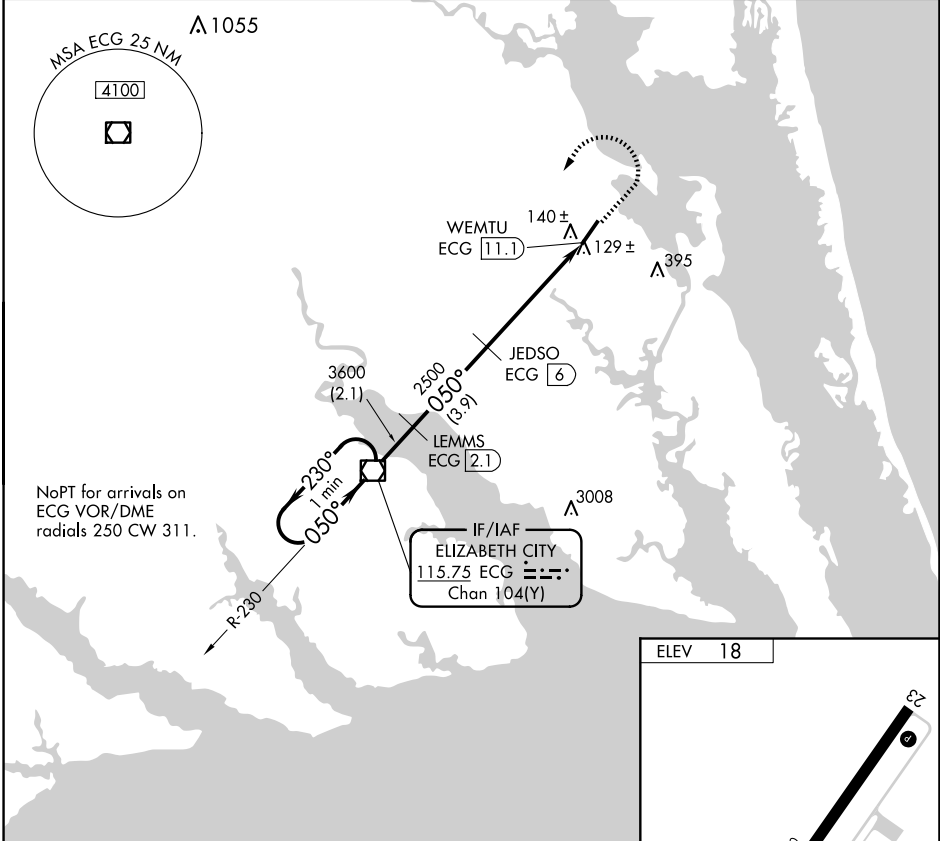
VOR/DME ECG 115.75 Chan 104(Y)	APP CRS 050°	Rwy Idg TDZE Apt Elev	N/A N/A 18
--	------------------------	-----------------------------	---------------------------------------

VOR/DME-A
CURRITUCK COUNTY RGNL (ONX)

When local altimeter setting not received, use Oceana NAS/Apollo Soucek altimeter setting and increase all MDA 60 feet.
 Procedure NA when tethered balloon located approximately 11.4 NM southwest of airport is flying.

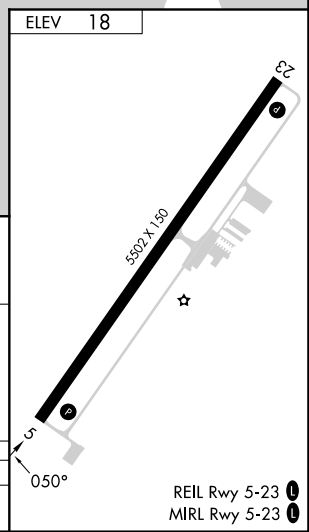
MISSED APPROACH: Climb to 1500 then climbing left turn to 4100 direct ECG VOR/DME and hold, continue climb-in-hold to 4100.

AWOS-3 119.775	OCEANA APP CON 123.9 266.8	CTAF 122.9 0
--------------------------	--------------------------------------	------------------------



NoPT for arrivals on ECG VOR/DME radials 250 CW 311.

IF/IAF
ELIZABETH CITY
115.75 ECG
Chan 104(Y)



One Minute Holding Pattern	ECG VOR/DME	LEMMS ECG (2.1)	JEDSO ECG (6)	WENTU ECG (11.1)
	1500	4100	ECG	
4100 ← 230°	050° →	3600	2500	
		2.1 NM	3.9 NM	5.1 NM
CATEGORY	A	B	C	D
CIRCLING	500-1	482 (500-1)	500-1½ 482 (500-1½)	760-2½ 742 (800-2½)

SE-2, 16 APR 2026 to 14 MAY 2026

SE-2, 16 APR 2026 to 14 MAY 2026