

WAAS CH 40125 W31A	APP CRS 315°	Rwy Ldg TDZE Apf Elev	5500 814 814
--	------------------------	-----------------------------	---

RNAV (GPS) RWY 31

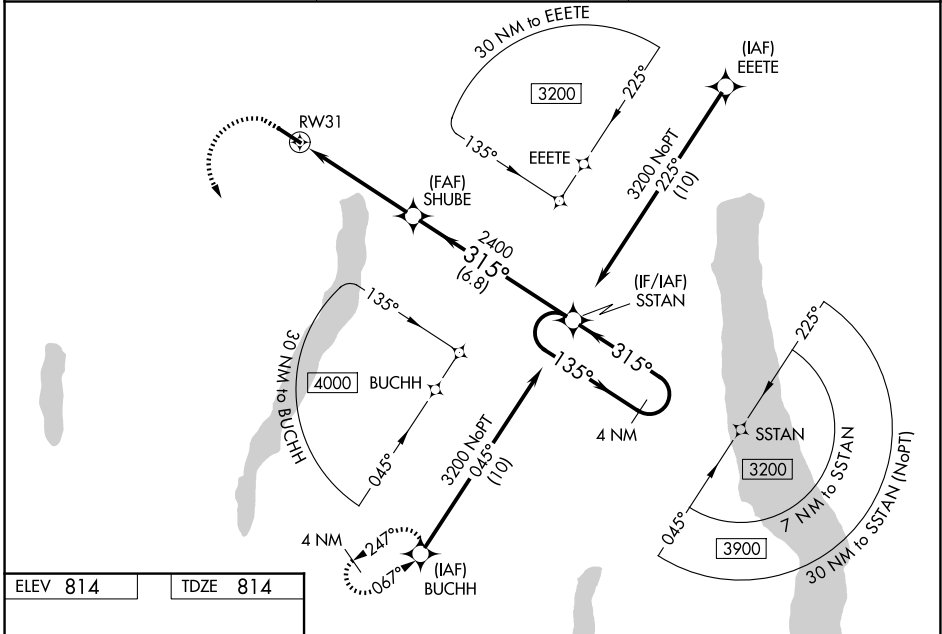
CANANDAIGUA (IUA)

RNP APCH-GPS.

NA For uncompensated Baro-VNAV systems, LNAV/VNAV NA below -16°C or above 54°C. When local altimeter setting not received, use ROC altimeter setting and increase LPV DA to 1146 feet and all visibilities ¼ SM. Increase LNAV/VNAV DA to 1328 feet and all visibilities ½ SM. Increase all MDAs 100 feet and LNAV visibility Cat C ¾ SM, and Circling visibility Cat C 1½ SM. Rwy 31 helicopter visibility reduction below ¾ SM NA. Baro-VNAV and VDP NA when using ROC altimeter setting.

MISSED APPROACH: Climb to 1400 then climbing left turn to 3700 direct BUCHH and hold.

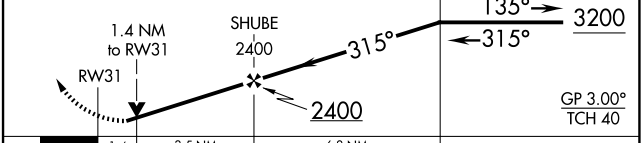
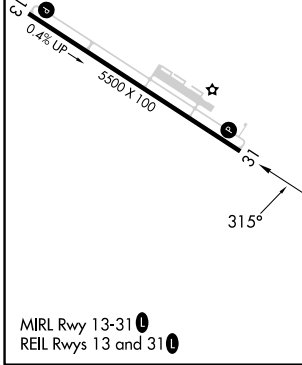
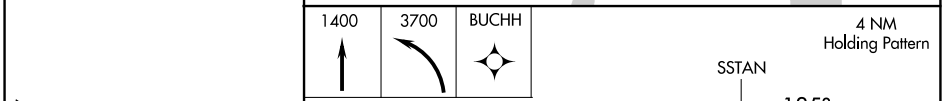
AWOS-3P 118.675	ROCHESTER APP CON 119.55 269.6	UNICOM 122.8 (CTAF) ①
---------------------------	--	---------------------------------



NE-2, 16 APR 2026 to 14 MAY 2026

NE-2, 16 APR 2026 to 14 MAY 2026

ELEV 814	TDZE 814
----------	----------



CATEGORY	A	B	C	D
LPV DA	1064-1	250 (300-1)		NA
LNAV/VNAV DA	1246-1¼	432 (500-1¼)		NA
LNAV MDA	1300-1	486 (500-1)	1300-1¾ 486 (500-1¾)	NA
CIRCLING	1460-1	646 (700-1)	1540-2 726 (800-2)	NA