

VOR/DME GEE <b>108.2</b> Chan <b>19</b>	APP CRS <b>085°</b>	Rwy Ldg TDZE Apt Elev <b>814</b>	<b>N/A</b> <b>N/A</b> <b>814</b>
---	------------------------	--	--

**VOR-A**  
CANANDAIGUA (IUA)

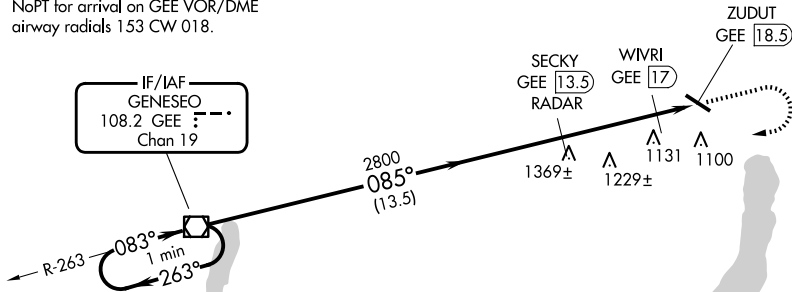
DME or RADAR required.

When local altimeter setting not received, use Rochester altimeter setting and increase all MDAs 100 feet and Circling visibility all Cats ¼ SM, increase WIVRI Fix Circling minimums visibility Cat C ½ SM.

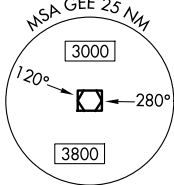
MISSED APPROACH: Climb to 2000 then climbing right turn to 3500 direct GEE VOR/DME and hold.

AWOS-3P <b>118.675</b>	ROCHESTER APP CON <b>119.55 269.6</b>	UNICOM <b>122.8 (CTAF) 0</b>
---------------------------	--	---------------------------------

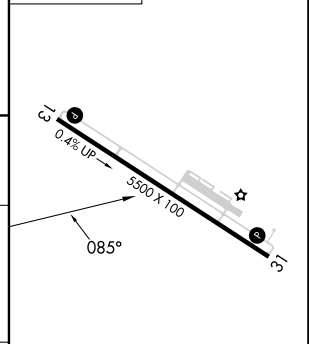
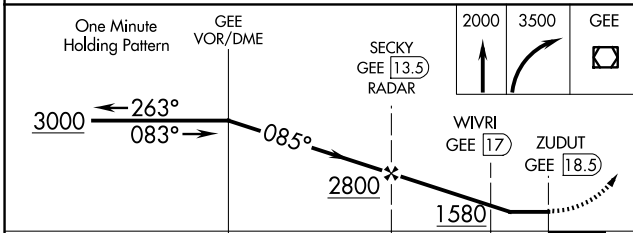
NoPT for arrival on GEE VOR/DME  
airway radials 153 CW 018.



IF/IAF  
GENESEO  
108.2 GEE  
Chan 19



ELEV 814



CATEGORY	A	B	C	D
CIRCLING	1580-1	766 (800-1)	1580-2 ¼ 766 (800-2 ¼)	NA
WIVRI FIX MINIMUMS				
CIRCLING	1500-1	686 (700-1)	1540-2 726 (800-2)	NA

FAF to MAP 5 NM					
Knots	60	90	120	150	180
Min:Sec	5:00	3:20	2:30	2:00	1:40