

WAAS CH 78433 W17A	APP CRS 179°	Rwy Ldg TDZE Apt Elev	5010 1010 1010
--	------------------------	-----------------------------	---

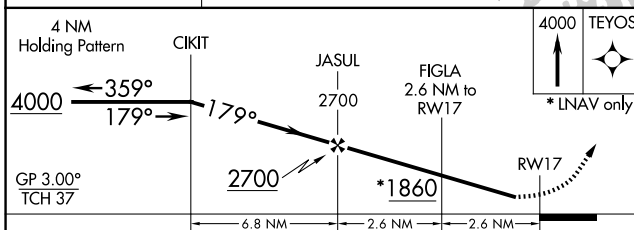
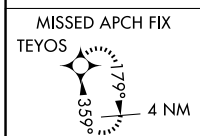
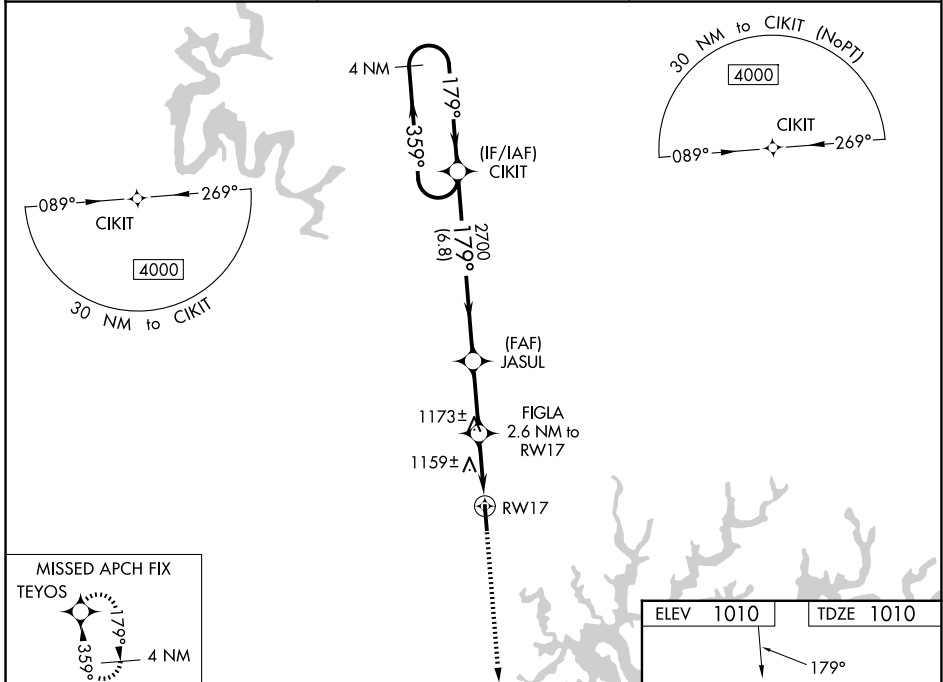
RNAV (GPS) RWY 17

RUSSELL COUNTY (K24)

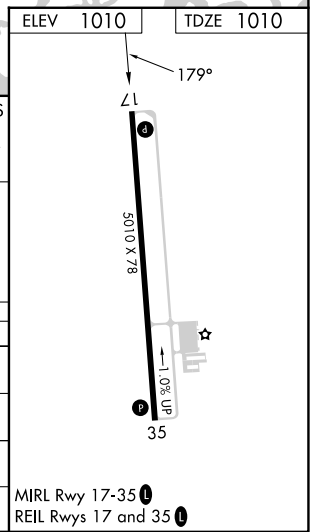
▼ Baro-VNAV NA when using Wayne County altimeter setting. For uncompensated Baro-VNAV systems, LNAV/VNAV NA below -17°C (2°F) or above 54°C (130°F). When local altimeter setting not received, use Wayne County altimeter setting increase all DA 42 feet and increase all MDA 60 feet; increase LPV all Cats ½ mile; LNAV/VNAV all Cats ½ mile and LNAV and Circling Cats C/D visibility ¼ mile. DME/DME RNP-0.3 NA. Helicopter visibility reduction below ¾ SM NA.

▲ NA MISSED APPROACH: Climb to 4000 direct TEYOS and hold.

AWOS-3P 119.6	INDIANAPOLIS CENTER 124.625 371.925	UNICOM 123.0 (CTAF) 0
-------------------------	---	---------------------------------



CATEGORY	A	B	C	D
LPV DA		1346-1½	336 (400-1½)	
LNAV/VNAV DA		1424-1¾	414 (500-1¾)	
LNAV MDA	1420-1	410 (500-1)	1420-1½	410 (500-1½)
CIRCLING	1540-1 530 (600-1)	1620-1 610 (700-1)	1700-2 690 (700-2)	1700-2¼ 690 (700-2¼)



SE-1, 16 APR 2026 to 14 MAY 2026

SE-1, 16 APR 2026 to 14 MAY 2026