

WAAS CH <b>69427</b> <b>W11A</b>	APP CRS <b>114°</b>	Rwy Idg TDZE <b>2131</b> Apt Elev <b>2131</b>
--	------------------------	---

# RNAV (GPS) RWY 11

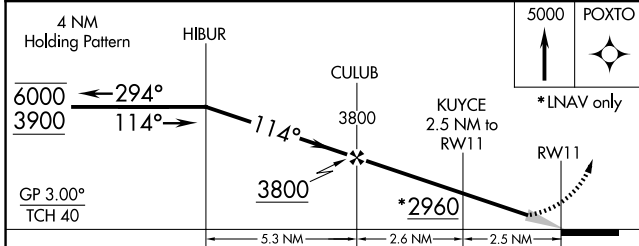
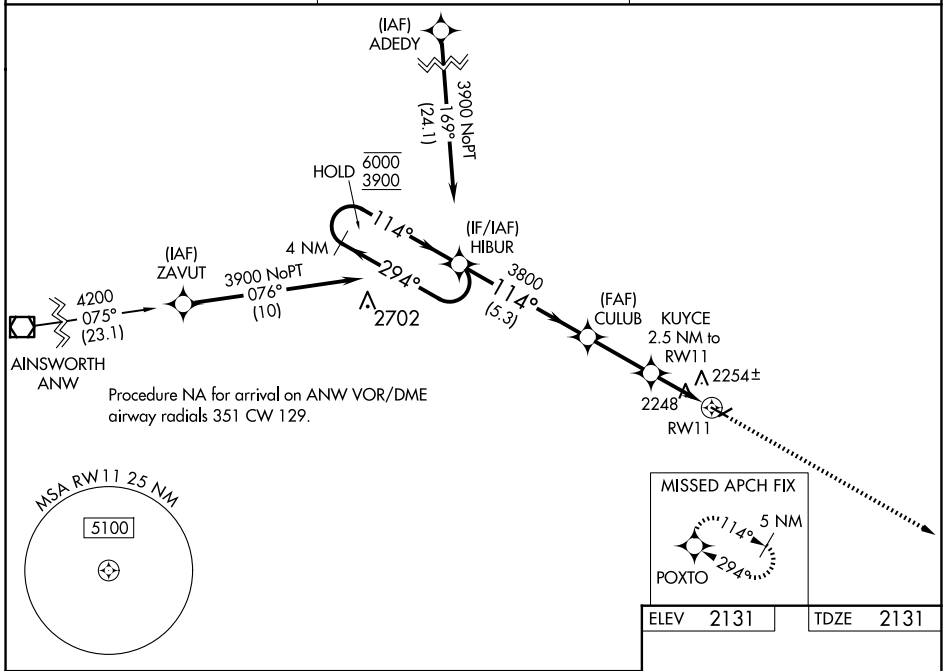
STUART-ATKINSON MUNI (8V2)

**RNP APCH.**

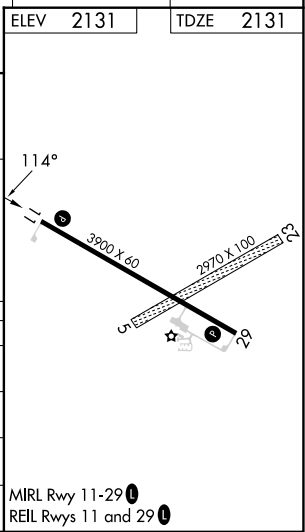
**NA** Circling NA to Rwy's 5 and 23. Baro-VNAV NA. Use O'Neill altimeter setting; when not received, use Ainsworth altimeter setting; increase LPV DA to 2547 feet and visibility all Cats to 1½ SM; increase LNAV/VNAV DA to 2691 feet and visibility all Cats to 1½ SM; increase all MDA 120 feet.

**MISSED APPROACH:** Climb to 5000 direct POXTO and hold, continue climb-in-hold to 5000.

ONL AWOS-3 <b>121.125</b>	MINNEAPOLIS CENTER <b>128.0 257.95</b>	CTAF <b>122.9</b>
------------------------------	---	----------------------



CATEGORY	A	B	C	D
LPV DA	2433-1	302 (400-1)		NA
LNAV/VNAV DA	2577-1 <sup>3</sup> / <sub>8</sub>	446 (500-1 <sup>3</sup> / <sub>8</sub> )		NA
LNAV MDA	2560-1	429 (500-1)		NA
CIRCLING	2620-1 489 (500-1)	2640-1 509 (600-1)		NA



NC-2, 16 APR 2026 to 14 MAY 2026

NC-2, 16 APR 2026 to 14 MAY 2026