

WAAS CH <b>45926</b> <b>W03A</b>	APP CRS <b>027°</b>	Rwy Ldg TDZE Apt Elev	<b>5003</b> <b>530</b> <b>537</b>
--	------------------------	-----------------------------	---

# RNAV (GPS) RWY 3

OHIO COUNTY (JQD)

RNP APCH - GPS.

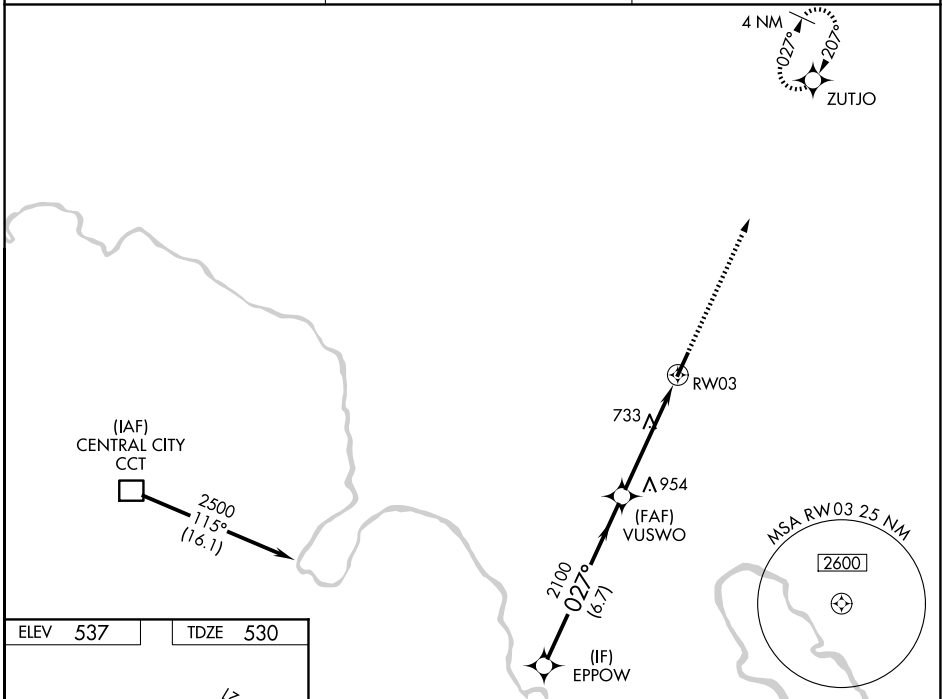
**⚠** Baro-VNAV and VDP NA when using Owensboro altimeter setting. For uncompensated Baro-VNAV systems, LNAV/VNAV NA below -16°C or above 54°C. When local altimeter setting not received, use Owensboro altimeter setting and increase LPV and LNAV/VNAV DA to 851 feet. Increase all MDA 80 feet and LNAV Cat C visibility  $\frac{3}{8}$  SM and Circling Cat C visibility  $\frac{1}{4}$  SM. Circling Rwy 21 NA at night. Rwy 3 helicopter visibility reduction below  $\frac{3}{8}$  SM NA.

**MISSED APPROACH:**  
Climb to 2500 direct ZUTJO and hold.

AWOS-3PT  
**132.1**

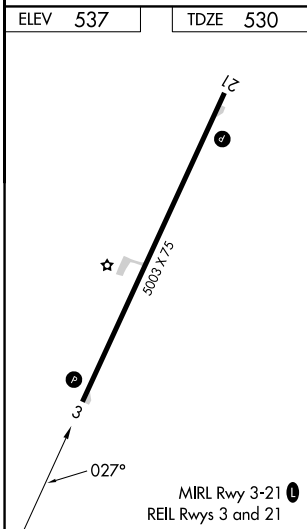
EVANSVILLE APP CON ★  
**124.025 290.9**

UNICOM  
**122.8 (CTAF)** **📻**



SE-1, 16 APR 2026 to 14 MAY 2026

SE-1, 16 APR 2026 to 14 MAY 2026



CATEGORY	EPPOW			
	A	B	C	D
LPV DA	780-1	250 (300-1)		NA
LNAV/VNAV DA	780-1	250 (300-1)		NA
LNAV MDA	1040-1	510 (600-1)	1040-1 $\frac{3}{8}$ 510 (600-1 $\frac{3}{8}$ )	NA
CIRCLING	1040-1 503 (600-1)	1100-1 563 (600-1)	1300-2 $\frac{1}{4}$ 763 (800-2 $\frac{1}{4}$ )	NA