

WAAS CH <b>93640</b> <b>W25A</b>	APP CRS <b>249°</b>	Rwy Ldg <b>5005</b> TDZE <b>615</b> Apt Elev <b>615</b>
--	------------------------	---

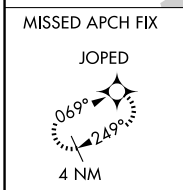
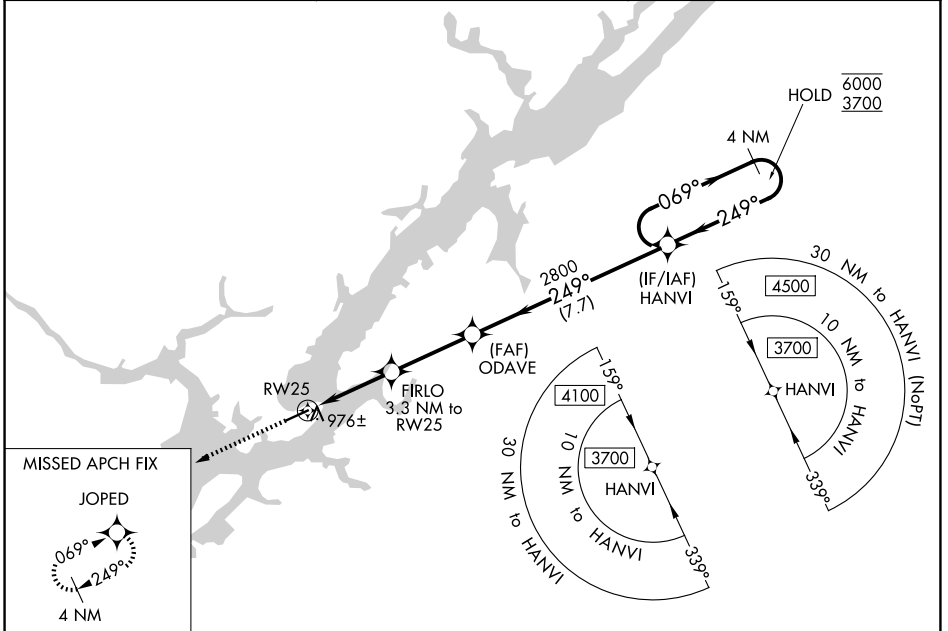
# RNAV (GPS) RWY 25

GUNTERSVILLE MUNI/JOE STARNES FLD (8A.1)

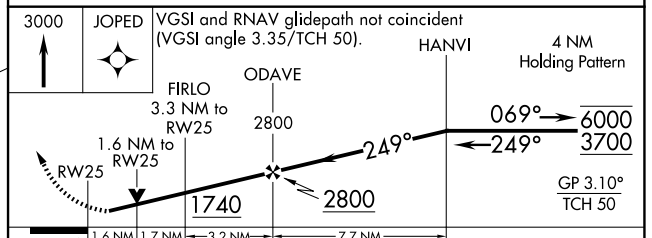
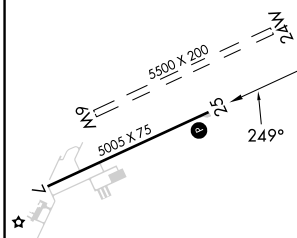
RNP APCH - GPS.  
 ⚠ Rwy 25 helicopter visibility reduction below 3/4 SM NA.  
 ⚠ Circling NA to Rwys 6 and 24. Circling Rwy 7 NA at night.  
 For uncompensated Baro-VNAV systems, LNAV/VNAV NA below -16°C or above 54°C.

MISSED APPROACH: Climb to 3000 direct JOPED and hold.

AWOS-3PT <b>121.125</b>	HUNTSVILLE APP CON ★ <b>125.6 354.1</b>	UNICOM <b>122.8 (CTAF)</b>
----------------------------	--	-------------------------------



ELEV <b>615</b>	TDZE <b>615</b>
-----------------	-----------------



CATEGORY	A	B	C	D
LPV DA		971-1	356 (400-1)	
LNAV/VNAV DA		1169-1½	554 (600-1½)	
LNAV MDA	1240-1	625 (700-1)	1240-1¾	625 (700-1¾)
CIRCLING	1320-1	705 (800-1)	1620-3 1005 (1100-3)	1680-3 1065 (1100-3)

REIL Rwy 7 and 25  
 MIRL Rwy 7-25

SE-4, 16 APR 2026 to 14 MAY 2026

SE-4, 16 APR 2026 to 14 MAY 2026