

WAAS CH 90340 W07A	APP CRS 069°	Rwy Ldg 5005 TDZE 610 Apt Elev 615
--	------------------------	---

RNAV (GPS) RWY 7

GUNTERSVILLE MUNI/JOE STARNES FLD (8A.1)

RNP APCH - GPS.

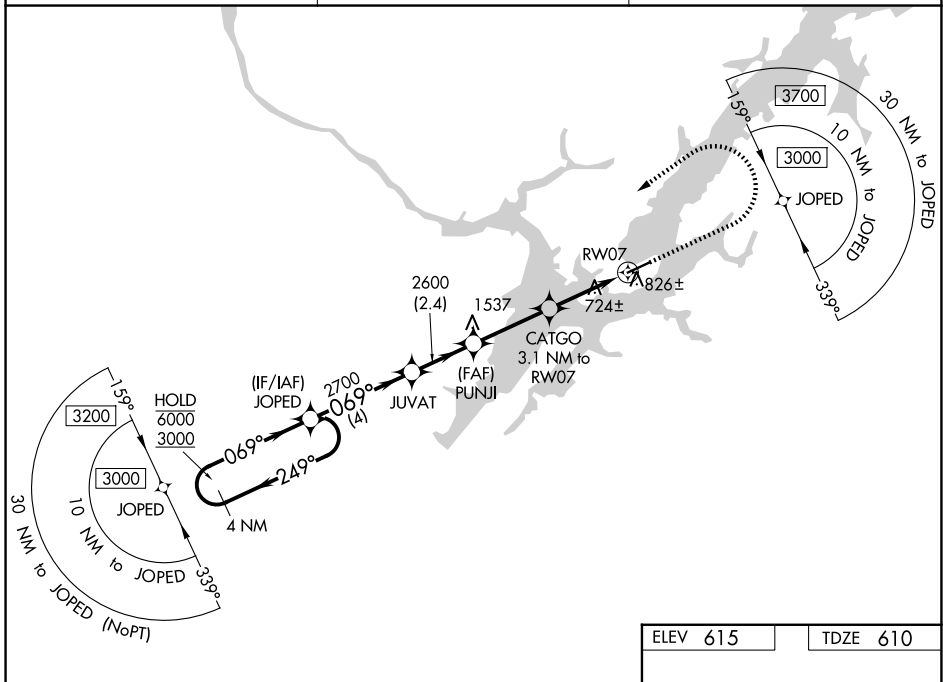
▼ Rwy 7 helicopter visibility reduction below 1 SM NA.
▲ NA Circling NA to Rwys 6 and 24. Straight-in Rwy 7 NA at night, Circling Rwy 7 NA at night.

MISSED APPROACH: Climb to 1400 then climbing left turn to 3000 direct JOPED and hold.

AWOS-3PT
121.125

HUNTSVILLE APP CON ★
125.6 354.1

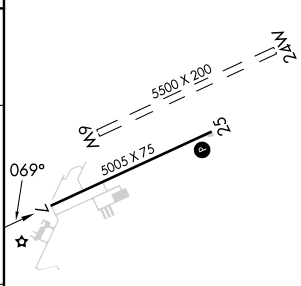
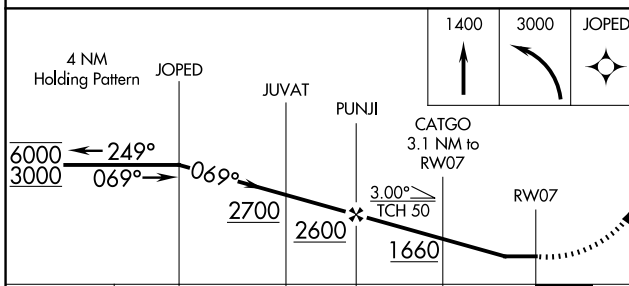
UNICOM
122.8 (CTAF)



SE-4, 16 APR 2026 to 14 MAY 2026

SE-4, 16 APR 2026 to 14 MAY 2026

ELEV 615	TDZE 610
----------	----------



CATEGORY	A	B	C	D
LP MDA	1040-1	430 (500-1)	1040-1¼	430 (500-1¼)
LNAV MDA	1140-1	530 (600-1)	1140-1½	530 (600-1½)
CIRCLING	1360-1 745 (800-1)	1380-1 765 (800-1)	1620-3 1005 (1100-3)	1840-3 1225 (1300-3)

REL Rwy 7 and 25 **1**
MRL Rwy 7-25 **1**