

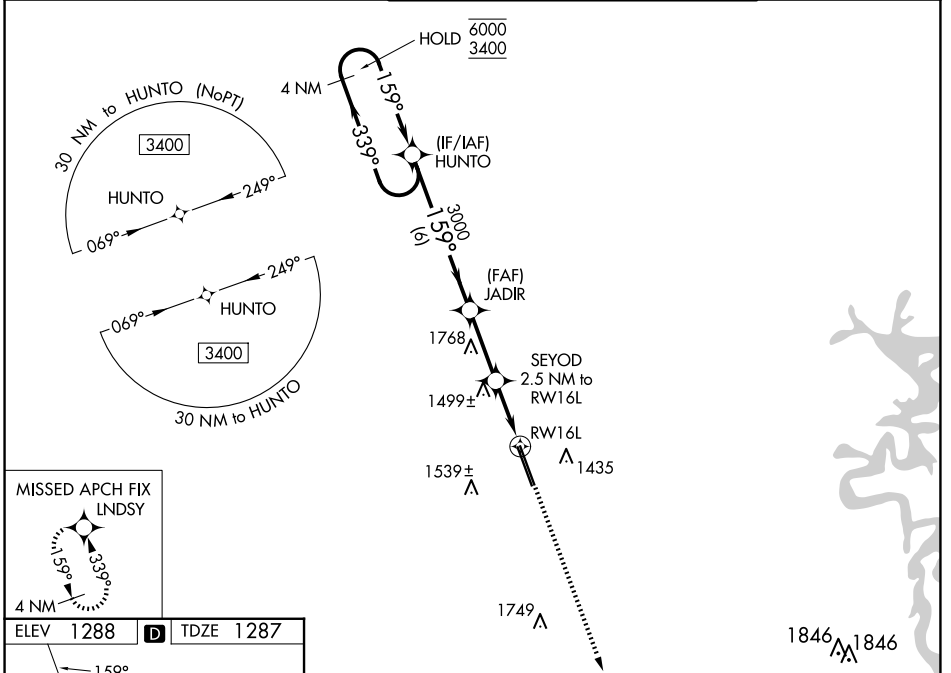
WAAS CH 56246 W16A	APP CRS 159°	Rwy Idg TDZE 1287 Apt Elev 1288	8800
--	------------------------	---	-------------

RNAV (GPS) RWY 16L

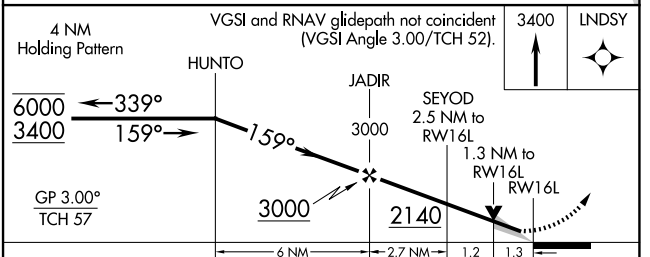
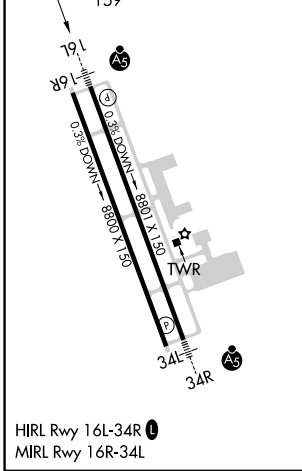
NORTHWEST ARKANSAS NTL (XNA)

RNP APCH - GPS.	MALSR	MISSED APPROACH: Climb to 3400 direct LND SY and hold.
<p>▼ For uncompensated Baro-VNAV systems, LNAV/VNAV NA below -15°C or above 54°C. For inop ALS, increase LPV Cat E visibility to RVR 4000, LNAV/VNAV Cat E visibility to 1¼ SM and LNAV Cats C, D, and E visibility to 1½ SM. *RVR 1800 authorized with use of FD or AP or HUD to DA.</p>		

ATIS 119.425	RAZORBACK APP CON * 121.0 244.575	NORTHWEST ARKANSAS NTL TOWER * 127.1 (CTAF)	GND CON 121.9
------------------------	---	---	-------------------------



ELEV 1288	D	TDZE 1287
-----------	----------	-----------



CATEGORY	A	B	C	D	E
LPV DA*		1487/24	200 (200-½)		
LNAV/VNAV DA		1710/40	423 (500-¾)		
LNAV MDA	1760/24	473 (500-½)	1760/50	473 (500-1)	
CIRCLING	1760-1	472 (500-1)	2040-2¼ 752 (800-2¼)	2080-2½ 792 (800-2½)	2080-2¾ 792 (800-2¾)

SC-1, 16 APR 2026 to 14 MAY 2026

SC-1, 16 APR 2026 to 14 MAY 2026