

WAAS CH 45847 W19A	APP CRS 189°	Rwy Ldg TDZE Apt Elev	3354 412 412
--	------------------------	-----------------------------	---

RNAV (GPS) RWY 19

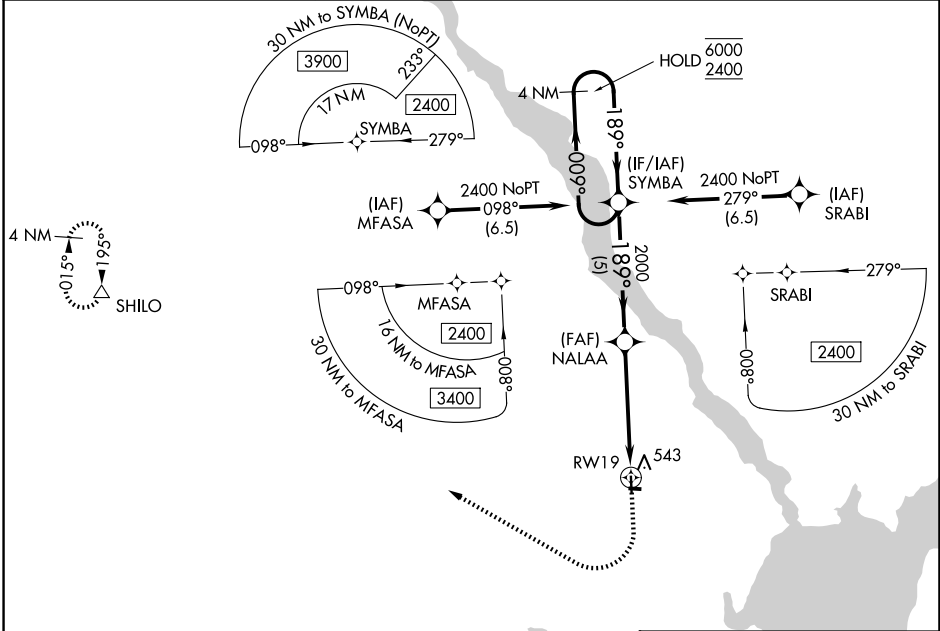
HARFORD COUNTY (W3)

RNP APCH - GPS.

⚠ For uncompensated Baro-VNAV systems, LNAV/VNAV NA below -15°C or above 54°C. Rwy 19 helicopter visibility reduction below 3/4 SM NA. Circling Rwy 1 NA at night. Circling NA for Cat C west of Rwy 1-19.

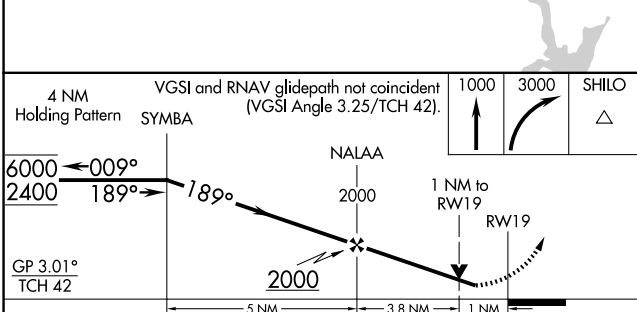
MISSED APPROACH: Climb to 1000 then climbing right turn to 3000 direct SHILO and hold.

AWOS-3PT 132.725	POTOMAC APP CON 125.525 291.625	UNICOM 122.8 (CTAF) 0
----------------------------	---	---------------------------------

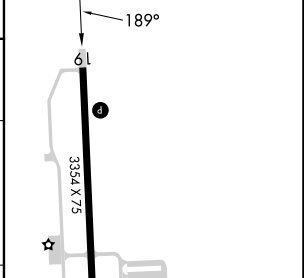


NE-3, 16 APR 2026 to 14 MAY 2026

NE-3, 16 APR 2026 to 14 MAY 2026



ELEV 412	TDZE 412
-----------------	-----------------



CATEGORY	A	B	C	D
LPV DA		696-7/8 284 (300-7/8)		NA
LNAV/VNAV DA		693-7/8 281 (300-7/8)		NA
LNAV MDA	800-1	388 (400-1)	800-1 1/8 388 (400-1 1/8)	NA
CIRCLING	860-1 448 (500-1)	880-1 468 (500-1)	880-1 1/2 468 (500-1 1/2)	NA

MIRL Rwy 1-19 **0**
REIL Rws 1 and 19 **0**