

APP CRS 227°	Rwy Ldg TDZE Apt Elev	4301 726 730
------------------------	-----------------------------	---

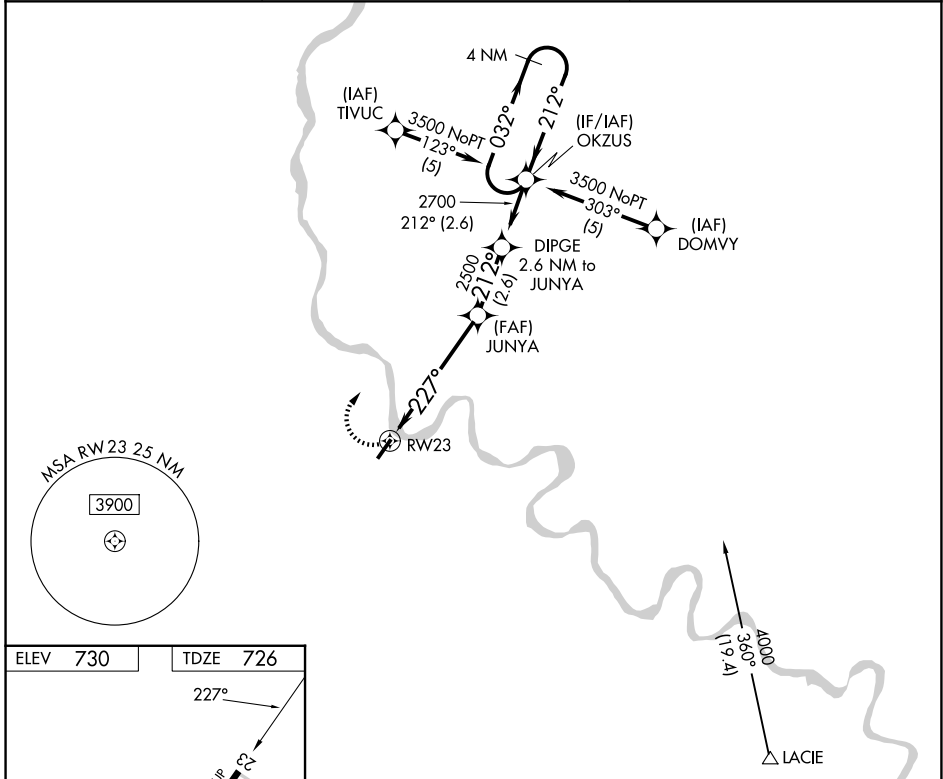
RNAV (GPS) RWY 23

BRADFORD COUNTY (N27)

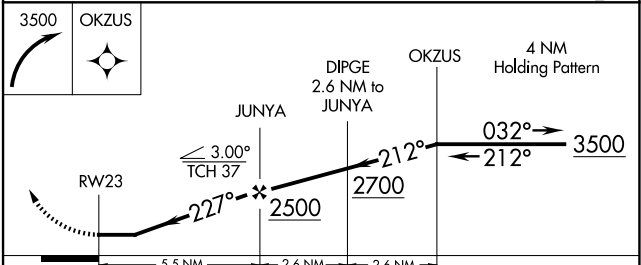
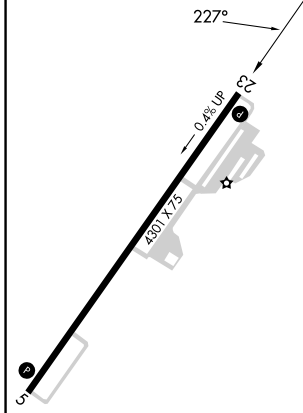
NA When local altimeter setting not received, use Elmira altimeter setting and increase all MDAs 40 feet. GPS or RNP-0.3 required. DME/DME RNP-0.3 NA. Night landing: RWY 5 NA. Helicopter visibility reduction below 3/4 SM NA.

MISSED APPROACH: Climbing right turn to 3500 direct OKZUS WP and hold.

AWOS-3 119.925	BINGHAMTON APP CON ★ 118.6 257.625	UNICOM 123.0 (CTAF)
--------------------------	--	-------------------------------



ELEV 730	TDZE 726
----------	----------



CATEGORY	A	B	C	D
LNAV MDA	1800-1¼ 1074 (1100-1¼)	1800-1½ 1074 (1100-1½)	NA	
CIRCLING	2020-1¼ 1290 (1300-1¼)	2020-1½ 1290 (1300-1½)	NA	

REIL Rwy 5 and 23 **1**
MIRL Rwy 5-23 **1**

NE-4, 16 APR 2026 to 14 MAY 2026

NE-4, 16 APR 2026 to 14 MAY 2026