

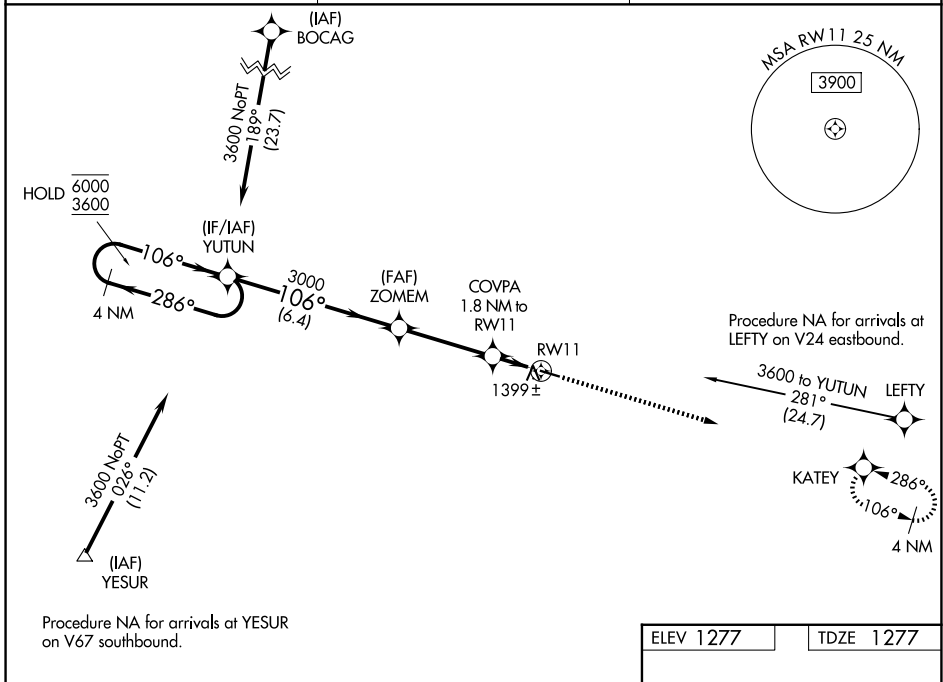
WAAS CH 65829 W11A	APP CRS 106°	Rwy Ldg TDZE Apt Elev	4001 1277 1277
----------------------------------------	------------------------	-----------------------------	-------------------------------------------

RNAV (GPS) RWY 11

FILLMORE COUNTY (FKA)

RNP APCH.	MISSED APPROACH: Climb to 3200 direct KATEY and hold.
<p>▼ Rwy 11 helicopter visibility reduction below 3/4 SM NA.</p> <p>▲ For uncompensated Baro-VNAV systems, LNAV/VNAV NA below -17°C or above 54°C.</p>	

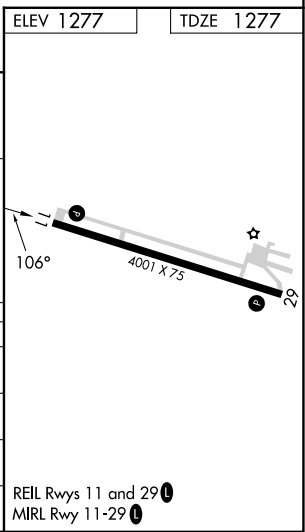
AWOS-3PT 118.55	ROCHESTER APP CON * 119.8 251.125	CTAF 122.9 0
---------------------------	---------------------------------------------	------------------------



NC-1, 16 APR 2026 to 14 MAY 2026

NC-1, 16 APR 2026 to 14 MAY 2026

4 NM Holding Pattern		VGSI and RNAV glidepath not coincident (VGSI Angle 3.00/TCH 26).		3200	KATEY
6000	← 286°	→ 106°	106°	3000	*LNAV only
3600				*1.1 NM to RWY 11	
GP 3.00° TCH 40		6.4 NM	3.5 NM	0.7	1.1 NM
CATEGORY	A	B	C	D	
LPV DA		1527-1 250 (300-1)		NA	
LNAV/VNAV DA		1573-1 296 (300-1)		NA	
LNAV MDA	1660-1	383 (400-1)	1660-1 3/8 383 (400-1 3/8)	NA	
CIRCLING	1700-1 423 (500-1)	1900-1 623 (700-1)	1900-1 3/4 623 (700-1 3/4)	NA	



REIL Rwy 11 and 29 0
MIRL Rwy 11-29 0