

# RNAV (GPS) RWY 29

PRINEVILLE (S39)

APP CRS <b>285°</b>	Rwy Ldg TDZE Apt Elev	<b>5405</b> <b>3240</b> <b>3251</b>
------------------------	-----------------------------	---

RNP APCH - GPS.

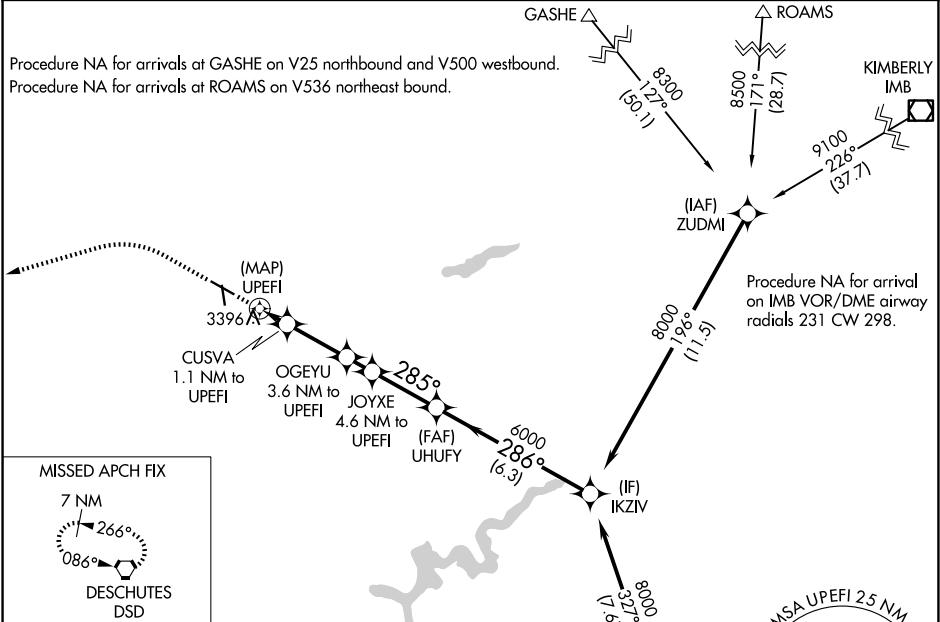
**⚠** Circling NA for Cat D south of Rwy 11-29.  
**⚠** Circling Rwy 16 NA at night.

MISSED APPROACH: Climb to 4700 then climbing left turn to 7100 direct DSD VORTAC and hold.

AWOS-3PT  
**118.325**

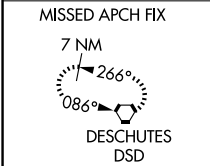
SEATTLE CENTER  
**126.15 269.475**

UNICOM  
**122.7 (CTAF)**

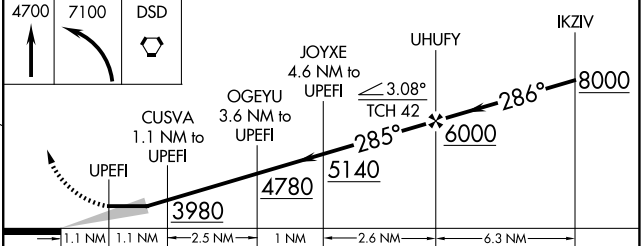
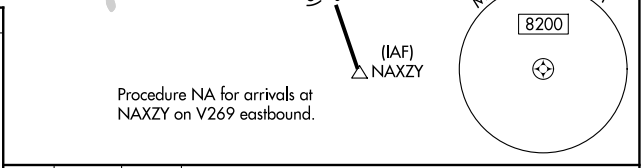
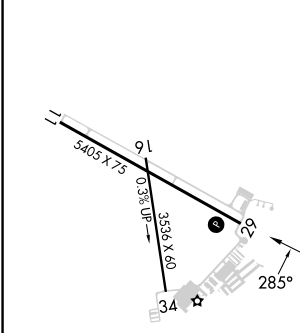


NW-1, 16 APR 2026 to 14 MAY 2026

NW-1, 16 APR 2026 to 14 MAY 2026



ELEV 3251	TDZE 3240
-----------	-----------



CATEGORY	A	B	C	D
LNNAV MDA	3700-1¼	460 (500-1¼)	3700-1⅓	460 (500-1⅓)
CIRCLING	3960-1¼ 709 (800-1¼)	4040-1¼ 789 (800-1¼)	4040-2¼ 789 (800-2¼)	4040-2½ 789 (800-2½)

MIRL Rwy 11-29  
 LIRL Rwy 16-34