

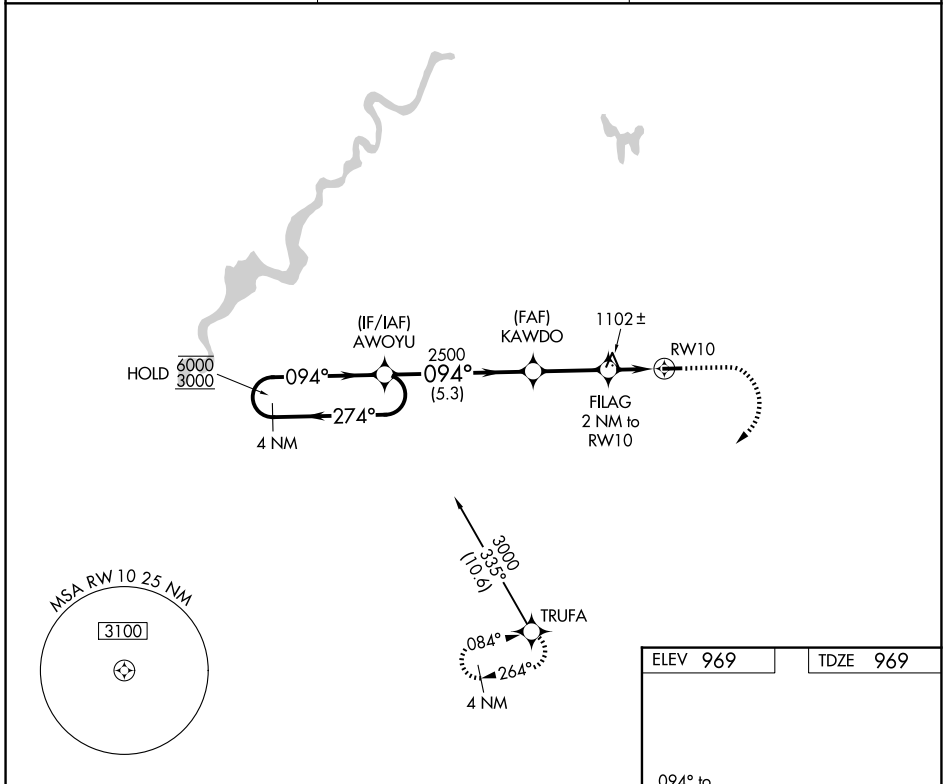
APP CRS	Rwy Ldg	<b>3499</b>
<b>094°</b>	TDZE	<b>969</b>
	Apt Elev	<b>969</b>

# RNAV (GPS) RWY 10

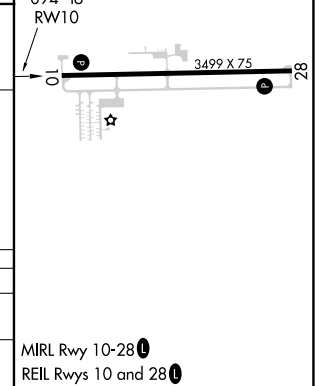
LAKEVIEW/GRIFFITH FLD (13C)

RNP APCH.	Procedure NA at night. Rwy 10 helicopter visibility reduction below 1 SM NA. Use Big Rapids altimeter setting.	MISSED APPROACH: Climb to 1800 then climbing right turn to 3000 direct TRUFA and hold.
⚠ NA		

RQB AWOS-3P <b>125.875</b>	GREAT LAKES APP CON * <b>124.6 257.6</b>	UNICOM <b>122.8 (CTAF)</b>
-------------------------------	---	-------------------------------



4 NM Holding Pattern		Visual Segment - Obstacles.		1800	3000	TRUFA
AWOYU		KAWDO		FILAG	RWY 10	
6000	← 274°	→ 094°	2500	2 NM to RWY 10	1640	
3000						
← 5.3 NM		← 2.7 NM		← 2 NM		
CATEGORY	A	B	C	D		
LNVA MDA	1400-1	431 (500-1)	NA			
CIRCLING	1480-1 511 (600-1)	1580-1 611 (700-1)	NA			



EC-1, 16 APR 2026 to 14 MAY 2026

EC-1, 16 APR 2026 to 14 MAY 2026