

APP CRS	Rwy Idg	N/A
189°	TDZE	N/A
	Apt Elev	4492

RNAV (GPS)-A

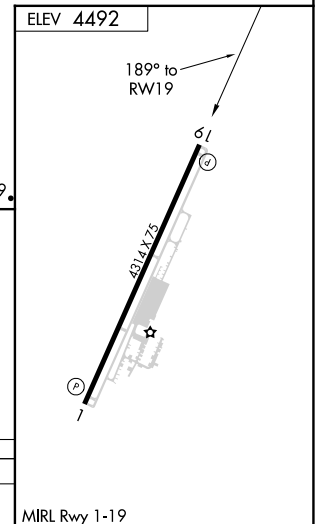
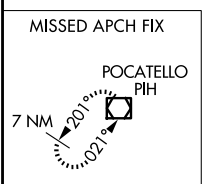
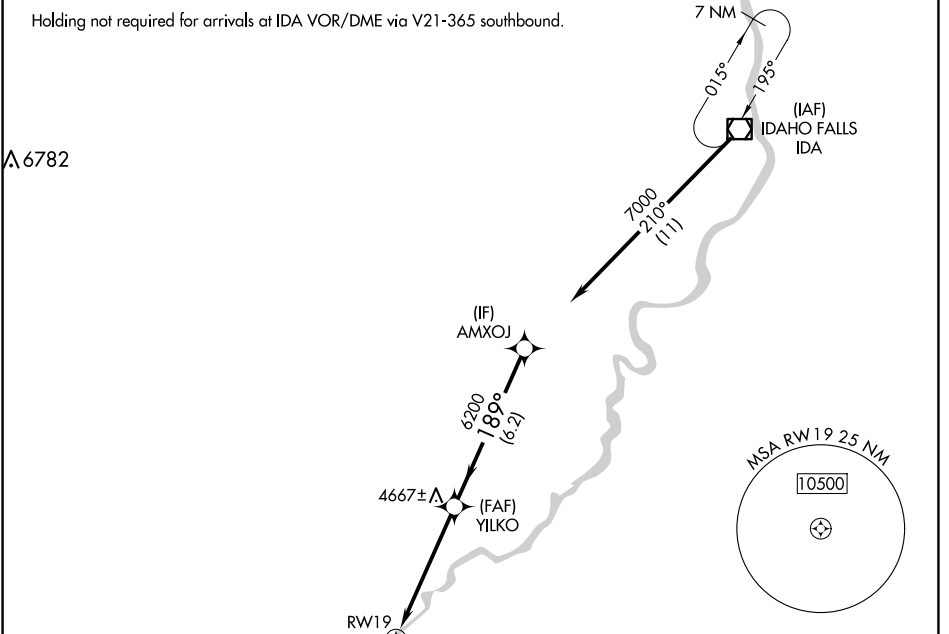
MCCARLEY FLD (U02)

RNP APCH.	MISSED APPROACH: Climb to 8500 direct NARBE and on 199° track to PIH VOR/DME and hold.
▼ Use Pocatello altimeter setting, when not received use Idaho Falls altimeter setting. Helicopter visibility reduction below 1 SM NA.	

SALT LAKE CITY CENTER 128.35 239.25	UNICOM 122.8 (CTAF)
---	-------------------------------

Holding not required for arrivals at IDA VOR/DME via V21-365 southbound.

▲ 6782



8500	NARBE	199° tr	PIH	Visual Segment - Obstacles.	AMXOJ
↑	✧		◻	YILKO	7000
				6200	Procedure Turn NA
				5.2 NM	6.2 NM

CATEGORY	A	B	C	D
CIRCLING	5340-1¼	848 (900-1¼)	5380-2¾ 888 (900-2¾)	5900-3 1408 (1500-3)

MIRL Rwy 1-19

NW-1, 16 APR 2026 to 14 MAY 2026

NW-1, 16 APR 2026 to 14 MAY 2026