

WAAS CH 97329 W16A	APP CRS 172°	Rwy Ldg 3500
		TDZE 1195
		Apt Elev 1195

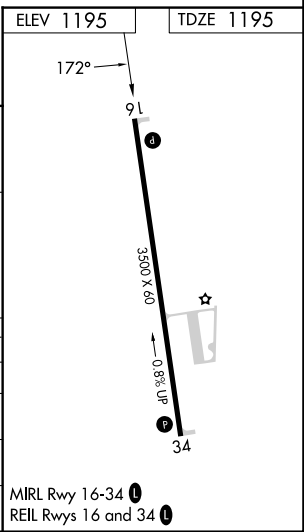
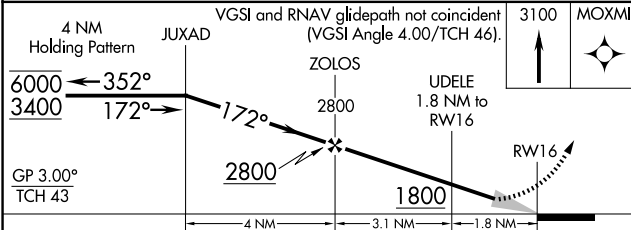
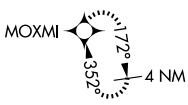
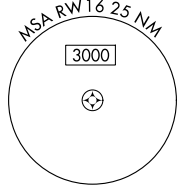
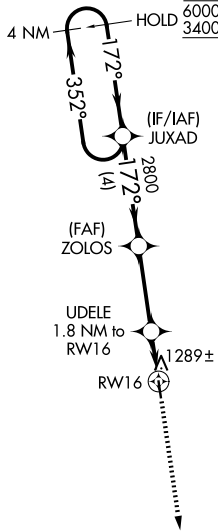
RNAV (GPS) RWY 16

HOUSTON MEML (M48)

RNP APCH-GPS.
 ▽ Baro-VNAV NA. Use Fort Leonard Wood altimeter setting, when not received use West Plains altimeter setting.
 ▲ NA

MISSED APPROACH: Climb to 3100 direct MOXMI and hold.

TBN ASOS 118.7 229.4	KANSAS CITY CENTER 128.35 284.675	CTAF 122.90
--------------------------------	---	-----------------------



	4 NM Holding Pattern		VGSI and RNAV glidepath not coincident (VGSI Angle 4.00/TCH 46).		3100	MOXMI
	6000	3400	2800	2800	1800	
	GP 3.00° TCH 43					
	4 NM		3.1 NM	1.8 NM		
CATEGORY	A	B	C	D		
LPV DA	1513-1	318 (400-1)		NA		
LNAV/VNAV DA	1513-1	318 (400-1)		NA		
LNAV MDA	1620-1	425 (500-1)		NA		
CIRCLING	1760-1 565 (600-1)	1880-1 685 (700-1)		NA		

MIRL Rwy 16-34
 REIL Rws 16 and 34

NC-3, 16 APR 2026 to 14 MAY 2026

NC-3, 16 APR 2026 to 14 MAY 2026