

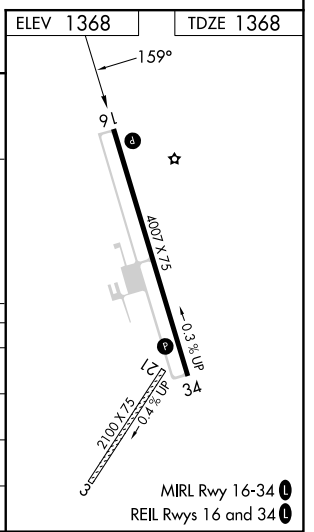
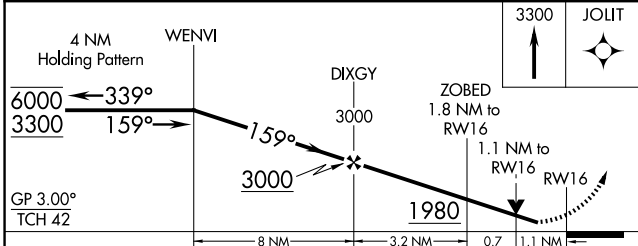
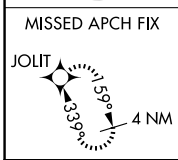
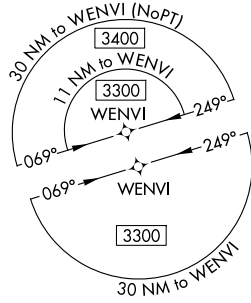
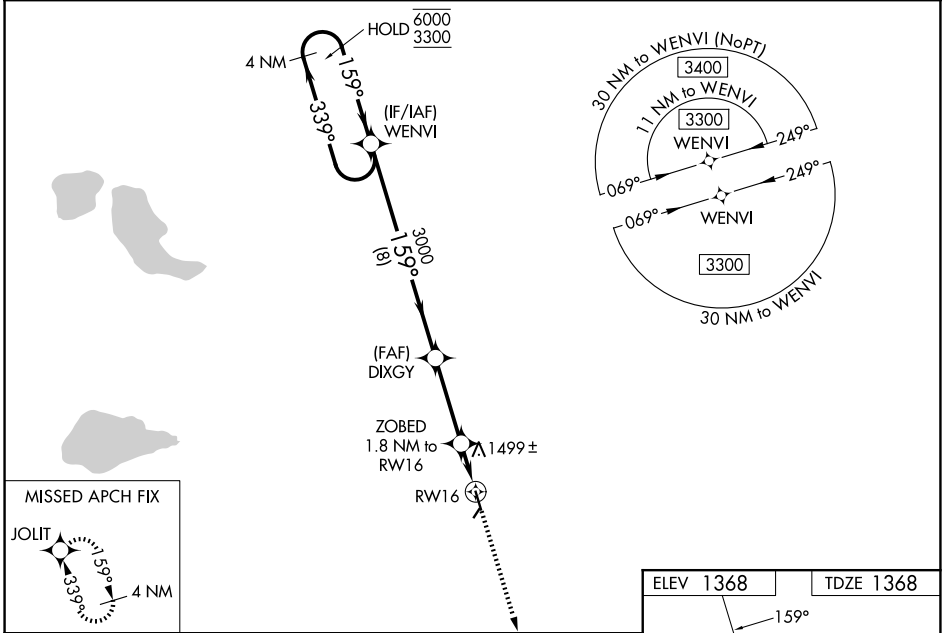
WAAS CH <b>58033</b> <b>W16A</b>	APP CRS <b>159°</b>	Rwy Ldg TDZE Apt Elev	<b>4007</b> <b>1368</b> <b>1368</b>
--	------------------------	-----------------------------	---

# RNAV (GPS) RWY 16

WADENA MUNI (ADC)

RNP APCH - GPS.	<p><b>⚠</b> Baro-VNAV and VDP NA when using SAZ altimeter setting. Rwy 16 helicopter visibility reduction below ¾ SM NA. Circling NA to Rwy 3 and 21. For uncompensated Baro-VNAV systems, LNAV/VNAV NA below -17°C or above 54°C. When local altimeter setting not received, use SAZ altimeter setting and increase LPV DA to 1682 feet; increase LNAV/VNAV DA to 1811 feet and all visibilities ¼ SM. Increase all MDAs 60 feet and LNAV visibility Cat C ¼ SM, and Circling visibility Cat C ¼ SM.</p>
MISSED APPROACH: Climb to 3300 direct JOLIT and hold.	

AWOS-3PT <b>118.875</b>	MINNEAPOLIS CENTER <b>126.1 269.2</b>	GCO <b>121.725</b>	UNICOM <b>122.8 (CTAF) 0</b>
----------------------------	--	-----------------------	---------------------------------



CATEGORY	A	B	C	D
LPV DA	1631-1 263 (300-1)			NA
LNAV/VNAV DA	1760-1 392 (400-1½)			NA
LNAV MDA	1760-1 392 (400-1)		1760-1½ 392 (400-1½)	NA
CIRCLING	1780-1 412 (500-1)	1820-1 452 (500-1)	1940-1½ 572 (600-1½)	NA

NC-1, 16 APR 2026 to 14 MAY 2026

NC-1, 16 APR 2026 to 14 MAY 2026

MIRL Rwy 16-34  
REIL Rwy 16 and 34