

WAAS CH <b>42822</b> <b>W24A</b>	APP CRS <b>247°</b>	Rwy Ldg TDZE Apt Elev	<b>5500</b> <b>665</b> <b>665</b>
--	------------------------	-----------------------------	---

# RNAV (GPS) RWY 24

SANDUSKY COUNTY RGNL (S24)

RNP APCH - GPS.

**⚠** Baro-VNAV and VDP NA when using TOL altimeter setting. For uncompensated Baro-VNAV systems, procedure NA below -16°C or above 54°C. When local altimeter setting not received, use TOL altimeter setting: increase LPV DA to 978 feet and all visibilities 3/8 SM; increase LNAV/VNAV DA to 1196 feet and all visibilities 3/8 SM; increase all MDA 100 feet and LNAV visibility Cat C and D 1/4 SM and Circling visibility Cat C and D 1/2 SM.

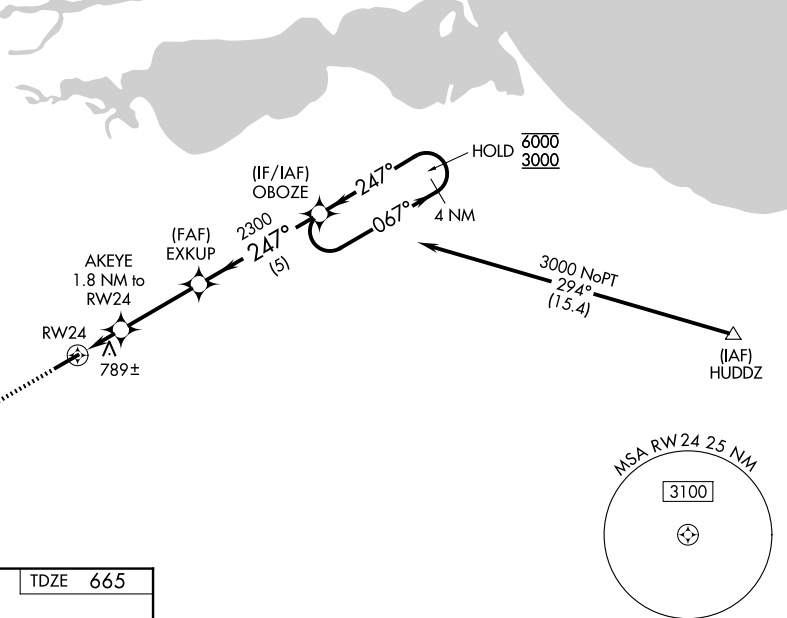
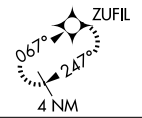
**MISSED APPROACH:**  
Climb to 3000 direct ZUFIL and hold.

AWOS-3P  
**119.575**

TOLEDO APP CON  
**126.1 307.0**

UNICOM  
**123.05 (CTAF) 0**

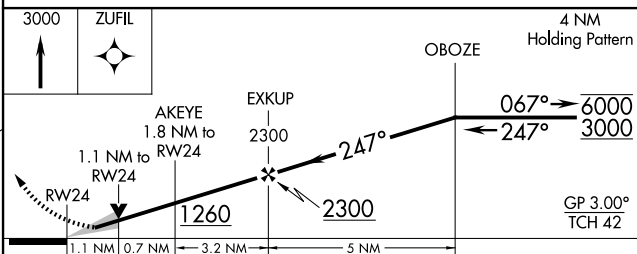
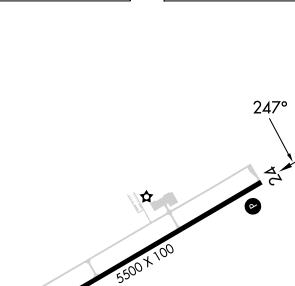
MISSED APCH FIX



EC-2, 16 APR 2026 to 14 MAY 2026

EC-2, 16 APR 2026 to 14 MAY 2026

ELEV	665	TDZE	665
------	-----	------	-----



CATEGORY	A	B	C	D
LPV DA	885-3/4		220 (300-3/4)	
LNAV/VNAV DA	1103-1 1/2		438 (500-1 1/2)	
LNAV MDA	1040-1	375 (400-1)	1040-1 1/8	375 (400-1 1/8)
CIRCLING	1120-1 455 (500-1)	1160-1 495 (500-1)	1380-2 715 (800-2)	1380-2 1/4 715 (800-2 1/4)

REIL Rws 6 and 24 **0**  
MIRL Rwy 6-24 **0**