

WAAS CH 70431 W24A	APP CRS 245°	Rwy Ldg TDZE 1666 Apt Elev 1666
--	------------------------	---

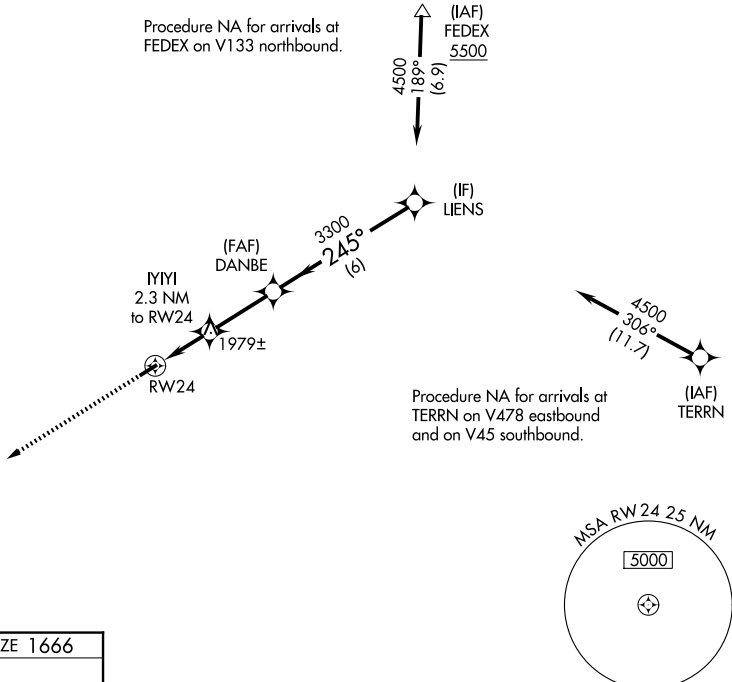
RNAV (GPS) RWY 24

LOGAN COUNTY (6L4)

⚠ For uncompensated Baro-VNAV systems, LNAV/VNAV NA below -18°C (0°F) or above 54°C (130°F). Baro-VNAV and VDP NA when using Pineville altimeter setting. DME/DME RNP-0.3 NA.
⚠ When local altimeter setting not received, use Pineville altimeter setting: increase LPV DA to 1985 feet and all visibilities $\frac{1}{8}$ SM; increase LNAV/VNAV DA to 1988 feet and all visibilities $\frac{1}{4}$ SM; increase all MDA 80 feet and LNAV Cat C visibility and Circling Cat B visibility $\frac{1}{4}$ SM.

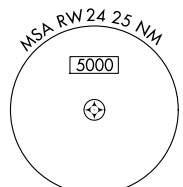
MISSED APPROACH:
Climb to 3800 direct MYNAS and hold.

AWOS-3PT 119.375	CHARLESTON APP CON 119.2 269.125	CTAF 122.9
----------------------------	--	-------------------

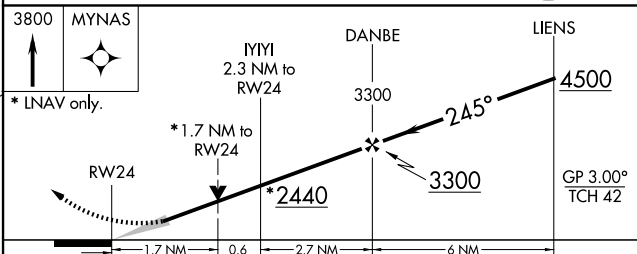
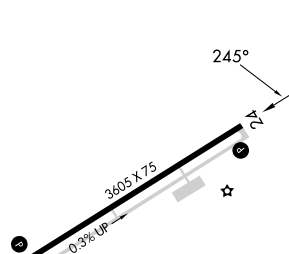


NE-4, 16 APR 2026 to 14 MAY 2026

NE-4, 16 APR 2026 to 14 MAY 2026



ELEV 1666	TDZE 1666
-----------	-----------



CATEGORY	A	B	C	D
LPV DA	1916- $\frac{7}{8}$	250 (300- $\frac{7}{8}$)		NA
LNAV/VNAV DA	1919- $\frac{7}{8}$	253 (300- $\frac{7}{8}$)		NA
LNAV MDA	2240-1	574 (600-1)	2240-1 $\frac{5}{8}$ 574 (600-1 $\frac{5}{8}$)	NA
CIRCLING	2360-1 694 (700-1)	2400-1 734 (800-1)	2720-3 1054 (1100-3)	NA

REIL Rwy 6 and 24 **1**
MIRL Rwy 6-24 **1**