

WAAS CH 40438 W06A	APP CRS 065°	Rwy Ldg TDZE Apt Elev	3605 1665 1666
--	------------------------	-----------------------------	---

RNAV (GPS) RWY 6

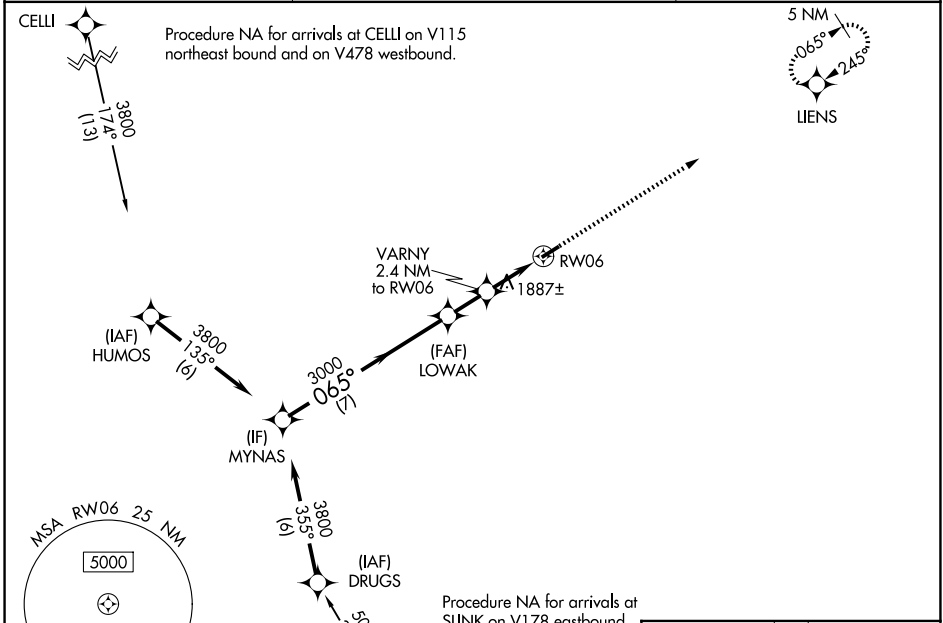
LOGAN COUNTY (6L4)

RNP APCH - GPS.

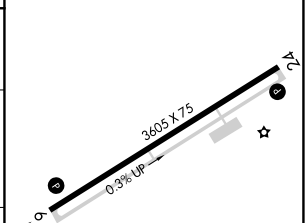
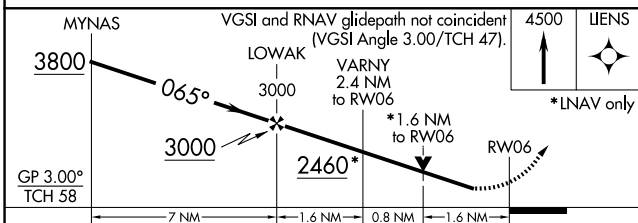
⚠ Rwy 6 helicopter visibility reduction below 3/4 SM NA. Baro-VNAV NA. When local altimeter setting not received, use Pineville altimeter setting: increase LPV DA to 2079 feet and LNAV/VNAV DA to 2032 feet and LPV and LNAV/VNAV all Cats visibilities 1/4 SM; increase all MDA 80 feet and LNAV Cat C visibility and Circling Cat B visibility 1/4 SM. VDP NA when using Pineville altimeter setting.

⚠ MISSED APPROACH: Climb to 4500 direct LIENS and hold.

AWOS-3PT 119.375	CHARLESTON APP CON 119.2 269.125	CTAF 122.9
----------------------------	--	-------------------



ELEV 1666	TDZE 1665
-----------	-----------



CATEGORY	A	B	C	D
LPV DA	2010-1 1/8	345 (400-1 1/8)		NA
LNAV/VNAV DA	1963-1	298 (300-1)		NA
LNAV MDA	2200-1	535 (600-1)	2200-1 1/2 535 (600-1 1/2)	NA
CIRCLING	2360-1 694 (700-1)	2400-1 734 (800-1)	2720-3 1054 (1100-3)	NA

REIL Rwy 6 and 24 **1**
MIRL Rwy 6-24 **1**

NE-4, 16 APR 2026 to 14 MAY 2026

NE-4, 16 APR 2026 to 14 MAY 2026