

APP CRS	Rwy Ldg	4000
179°	TDZE	1092
	Apt Elev	1092

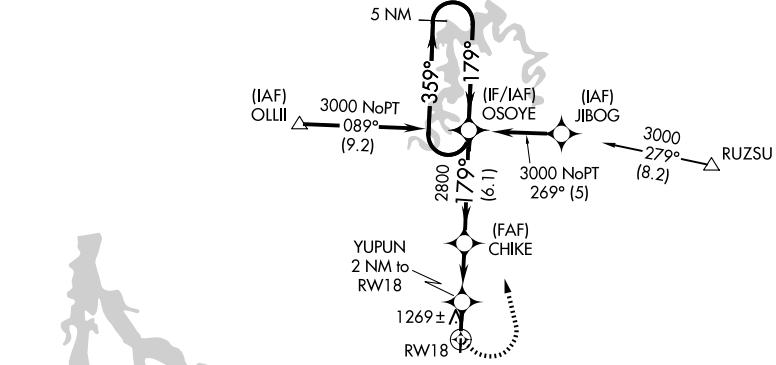
RNAV (GPS) RWY 18

BOLIVAR MUNI (M17)

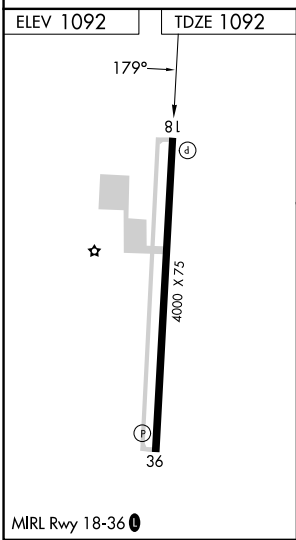
RNP APCH - GPS.		MISSED APPROACH: Climbing left turn to 3000 direct OSOYE and hold.
<p>▼ Rwy 18 helicopter visibility reduction below 1 SM NA.</p> <p>▲ NA Use Springfield-Branson Ntl altimeter setting. Straight-in and Circling Rwy 18 NA at night.</p>		
SPRINGFIELD APP CON 124.95 318.2		UNICOM 123.0 (CTAF) 0

NC-3, 16 APR 2026 to 14 MAY 2026

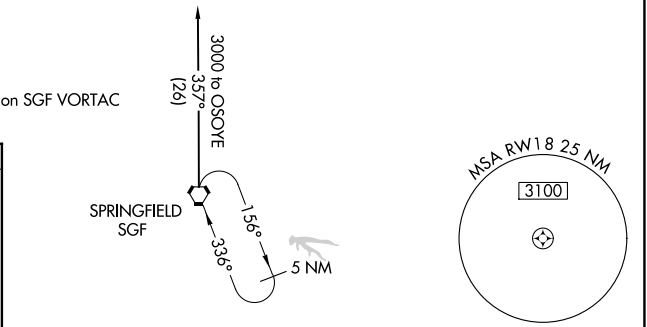
NC-3, 16 APR 2026 to 14 MAY 2026



Holding not required for arrivals on SGF VORTAC airway radials 075 CW 272.



MIRL Rwy 18-36 0



3000	OSOYE	VGSI and descent angles not coincident (VGSI Angle 3.75/TCH 40).	5 NM Holding Pattern	
		YUPUN 2 NM to RWY 18 $\leq 3.04^\circ$ TCH 38	CHIKE OSOYE 359° → 3000 ← 179°	
		RWY 18 1760 2800	2 NM 3.2 NM 6.1 NM	
CATEGORY	A	B	C	D
LNAV MDA	1600-1	508 (600-1)	1600-1 $\frac{3}{8}$ 508 (600-1 $\frac{3}{8}$)	NA
CIRCLING	1660-1	568 (600-1)	1740-1 $\frac{3}{4}$ 648 (700-1 $\frac{3}{4}$)	NA