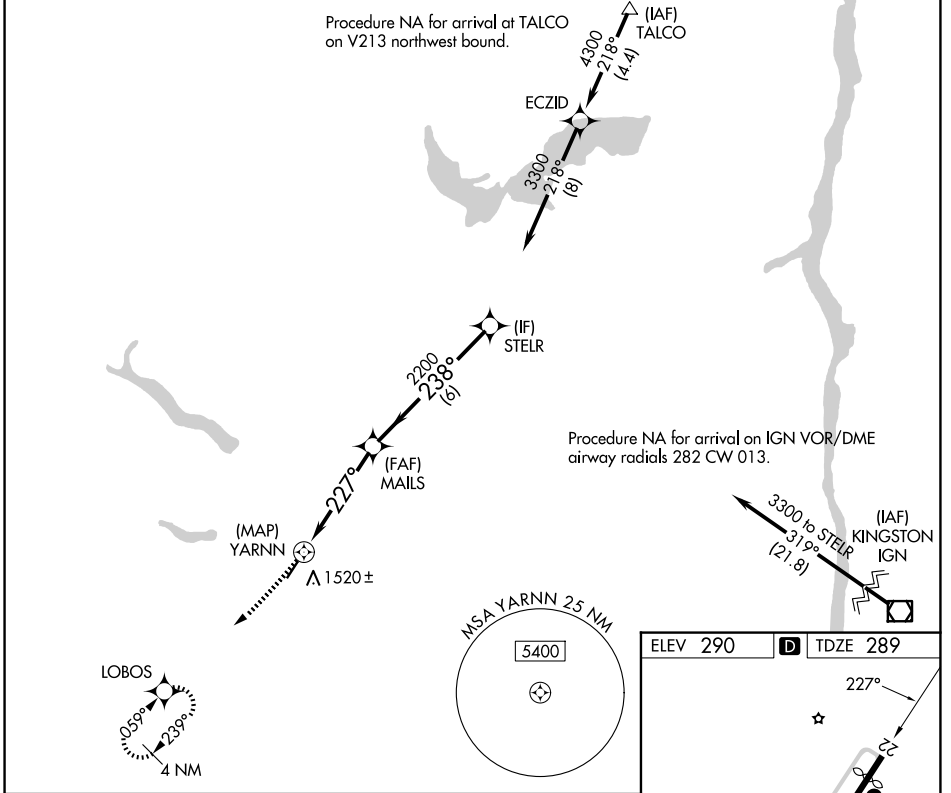


APP CRS <b>227°</b>	Rwy Ldg TDZE Apt Elev	<b>3530</b> <b>289</b> <b>290</b>
------------------------	-----------------------------	---

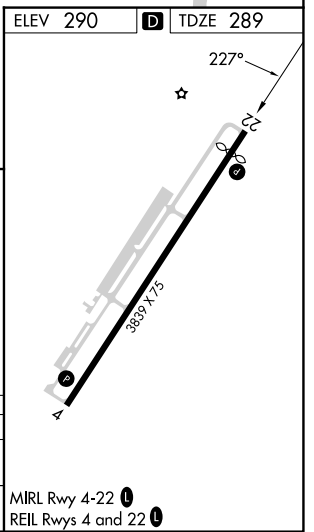
# RNAV (GPS) RWY 22

JOSEPH Y RESNICK (N89)

RNP APCH - GPS.		MISSED APPROACH: Climbing right turn to 4000 direct LOBOS and hold, continue climb-in-hold to 4000.
<p>▼ Circling NA southeast of Rwy 4-22. Procedure NA at night. Rwy 22 helicopter visibility reduction below 1 SM NA. Use New York Stewart Intl altimeter setting, -5° C when not received, use Poughkeepsie altimeter setting.</p> <p>▲ NA</p> <p>☄ -5° C</p>		
SWF ASOS <b>124.575</b>	NEW YORK APP CON <b>132.75 363.1</b>	UNICOM <b>122.8 (CTAF) 1</b>



4000	LOBOS	Visual Segment - Obstacles.	
YARNN		MAILS	STELR
227°		2200	238°
0.5		4.5 NM	6 NM
CATEGORY	A	B	C
LNVA MDA	1980-1¼ 1691 (1700-1¼)	1980-1½ 1691 (1700-1½)	NA
CIRCLING	1980-1¼ 1690 (1700-1¼)	1980-1½ 1690 (1700-1½)	NA



MRL Rwy 4-22 1  
REIL Rws 4 and 22 1

NE-2, 16 APR 2026 to 14 MAY 2026

NE-2, 16 APR 2026 to 14 MAY 2026