

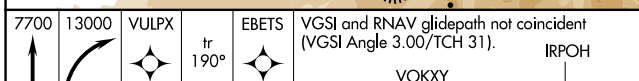
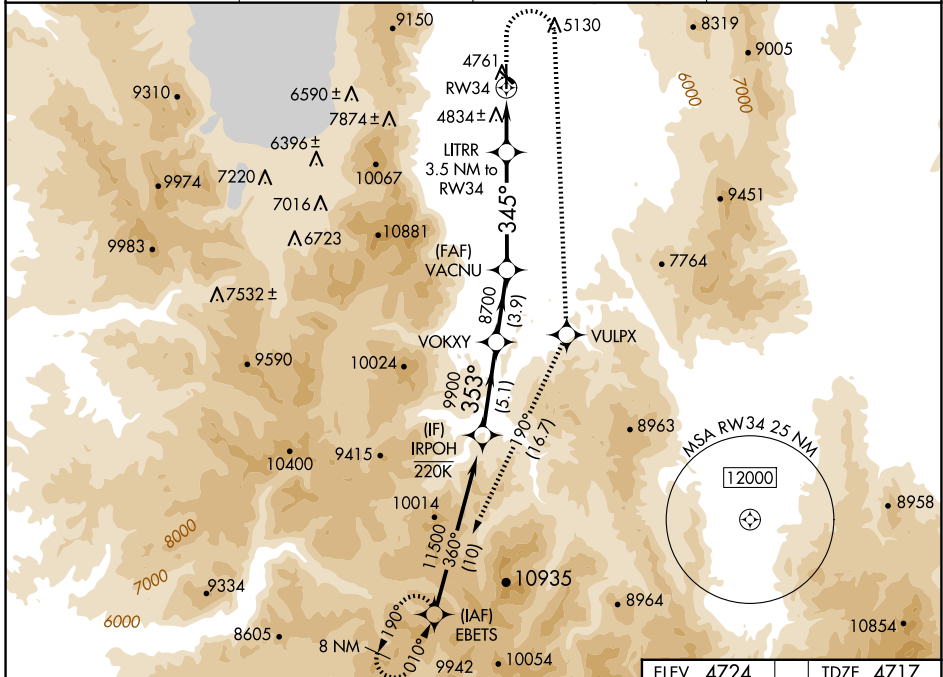
APP CRS 345°	Rwy Ldg TDZE Apt Elev	7399 4717 4724
------------------------	-----------------------------	---

RNAV (GPS) RWY 34

MINDEN-TAHOE (MEV)

RNP APCH - GPS.	MISSED APPROACH: Climb to 7700 then climbing right turn to 13000 direct VULPX and on track 190° to EBETS and hold.
Baro-VNAV NA. Circling NA to Rwy's 12G and 30G.	*Missed approach requires minimum climb of 310 feet per NM to 6700.

AWOS-3PT 119.325	NORCAL APP CON 119.2 279.55	CINC DEL 133.25	UNICOM 123.05 (CTAF)
----------------------------	---------------------------------------	---------------------------	--------------------------------

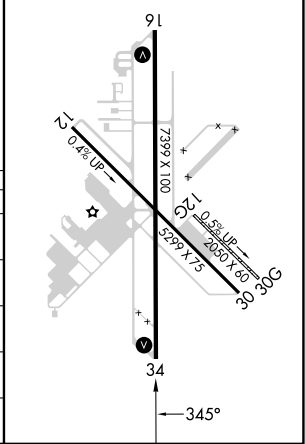


7700	13000	VULPX	tr 190°	EBETS	VGSJ and RNAV glidepath not coincident (VGSJ Angle 3.00/TCH 31).	IRPOH
		LITRR 3.5 NM to RW34		VACNU	VOKXY	11500
		1.9 NM to RW34		8700	9900	353°
		6160		8700	GP 3.77° TCH 45	
		1.9 NM		1.6 NM		6.3 NM
				3.9 NM		5.1 NM

CATEGORY	A	B	C	D
LNNAV/VNAV DA*	5145-1¼	428 (500-1¼)		NA
LNNAV/VNAV DA	5542-2½	825 (900-2½)		NA
LNNAV MDA*	5340-1	623 (700-1)	5340-1¾ 623 (700-1¾)	NA
LNNAV MDA	5720-1¼ 1003 (1000-1¼)	5720-1½ 1003 (1000-1½)	5720-3 1003 (1000-3)	NA
CIRCLING	5720-1¼ 996 (1000-1¼)	5720-1½ 996 (1000-1½)	5920-3 1196 (1200-3)	NA

ELEV 4724	TDZE 4717
-----------	-----------

HIRL Rwy 16-34
REIL Rwy's 16 and 34



SW-4, 16 APR 2026 to 14 MAY 2026

SW-4, 16 APR 2026 to 14 MAY 2026