

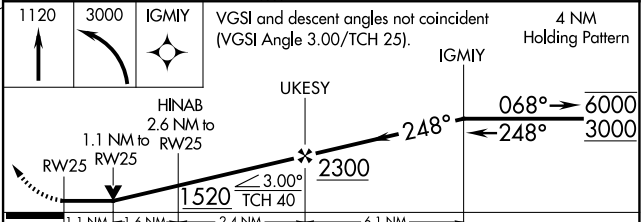
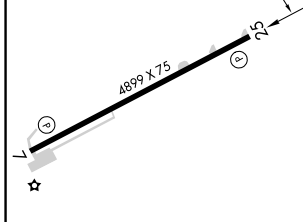
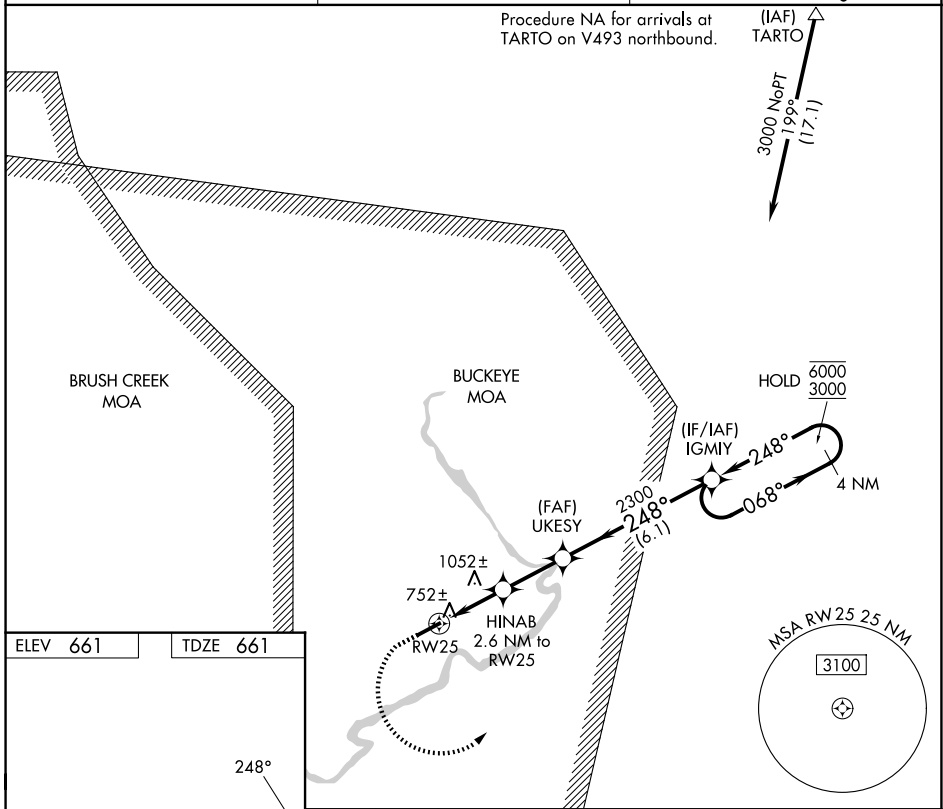
WAAS CH 97537 W25A	APP CRS 248°	Rwy Ldg TDZE 661 Apt Elev 661	4899 661 661
--	------------------------	---	---

RNAV (GPS) RWY 25

PIKE COUNTY (EOP)

RNP APCH - GPS	MISSED APPROACH: Climb to 1120 then climbing left turn to 3000 direct IGMY and hold.
<p>NA Rwy 25 helicopter visibility reduction below 3/4 SM NA. Circling Rwy 7 NA at night. When local altimeter setting not received, use PMH altimeter setting and increase all MDAs 60 feet and LNAV visibility Cat C/D 1/2 SM, and LP visibility Cat C/D 1/2 SM, and Circling visibility Cat A/B/C 1/2 SM. VDP NA when using PMH altimeter setting.</p>	

AWOS-3PT 121.45	INDIANAPOLIS CENTER 135.575 290.5	UNICOM 123.0 (CTAF)
---------------------------	---	-------------------------------



CATEGORY	A	B	C	D
LP MDA	1020-1 359 (400-1)			
LNAV MDA	1280-1	619 (700-1)	1280-1 3/4	619 (700-1 3/4)
CIRCLING	1440-1 779 (800-1)	1460-1 799 (800-1)	1500-2 1/2 839 (900-2 1/2)	1640-3 979 (1000-3)

REIL Rwy 7 and 25 **1**
MIRL Rwy 7-25 **1**

WAVERLY, OHIO
Amdt 2 12JUN25

39°10'N-82°56'W

RNAV (GPS) RWY 25

EC-2, 16 APR 2026 to 14 MAY 2026

EC-2, 16 APR 2026 to 14 MAY 2026