

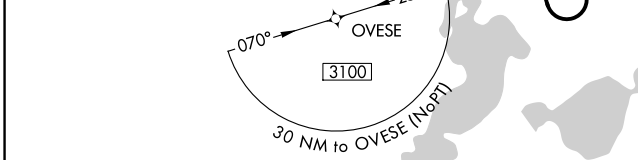
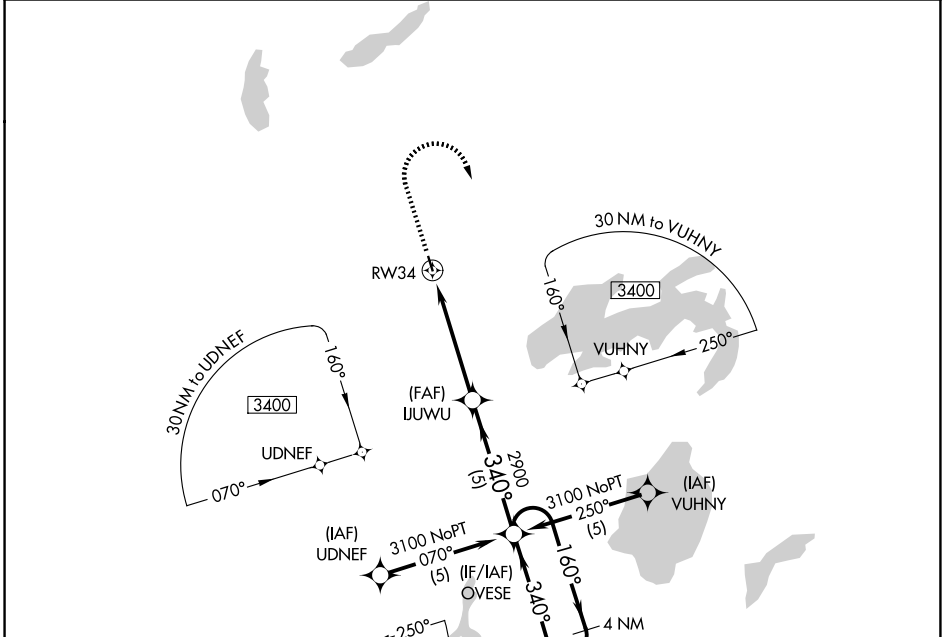
APP CRS	Rwy Ldg	3000
340°	TDZE	1295
	Apt Elev	1295

RNAV (GPS) RWY 34

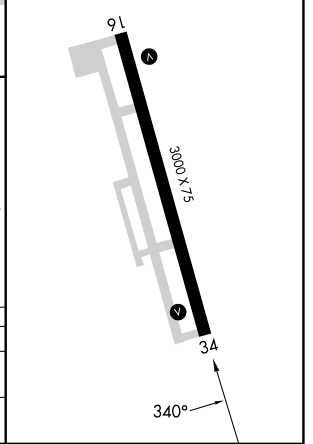
PINE RIVER RGNL (PWC)

<p>▽ NA GPS or RNP-0.3 required. DME/DME RNP-0.3 NA.</p>	<p>MISSED APPROACH: Climb to 2100 then climbing right turn to 3100 direct OVESE WP and hold.</p>
---	--

<p>AWOS-3PT 118.525</p>	<p>MINNEAPOLIS CENTER 118.05 239.0</p>	<p>CTAF 122.9 ①</p>
------------------------------------	---	---------------------------------------



ELEV 1295	TDZE 1295
MIRL Rwy 16-34 ①	
REIL Rwy 16 and 34 ①	



2100	3100	OVESE
↑	↷	✧
IUUWU		
1.2 NM to RWY 34	3.7 NM	5 NM
≤ 3.04° TCH 38	340°	160°
RWY 34	2900	3100
1.2	3.7 NM	5 NM

CATEGORY	A	B	C	D
LNVA MDA	1700-1	405 (500-1)	1700-1¼ 405 (500-1¼)	NA
CIRCLING	1760-1 465 (500-1)	1840-1 545 (600-1)	1840-1½ 545 (600-1½)	NA

NC-1, 16 APR 2026 to 14 MAY 2026

NC-1, 16 APR 2026 to 14 MAY 2026