

WAAS CH 86540 W27A	APP CRS 274°	Rwy Ldg 4650 TDZE 1463 Apt Elev 1465
--	------------------------	---

RNAV (GPS) RWY 27

PIKE COUNTY/HATCHER FLD (P.B.X)

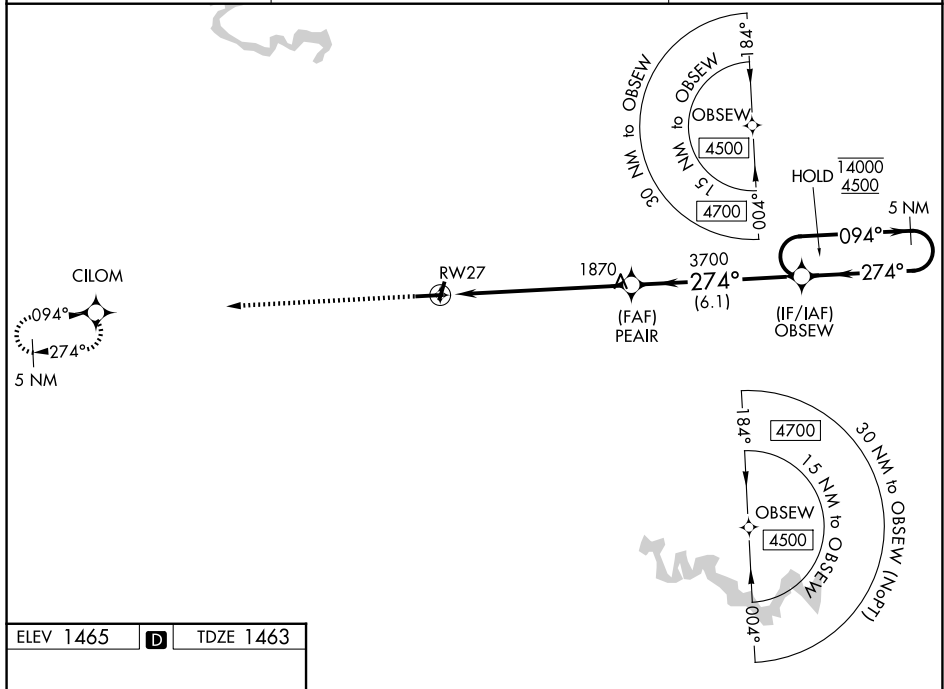
RNP APCH - GPS.

▼ For uncompensated Baro-VNAV systems, LNAV/VNAV NA below -17°C or above 54°C. Rwy 27 helicopter visibility reduction below 3/4 SM NA. Circling NA to Rws 2 and 20.

▲

MISSED APPROACH: Climb to 4500 direct CILOM and hold, continue climb-in-hold to 4500.

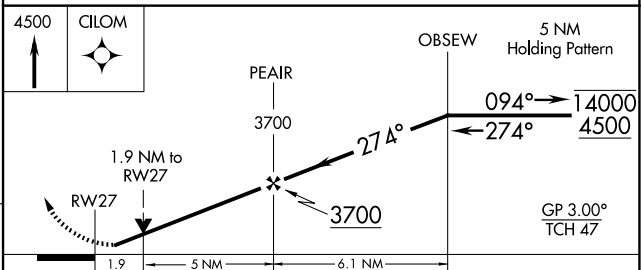
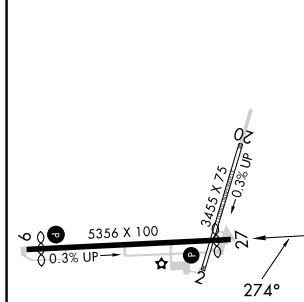
AWOS-3PT 121.225	INDIANAPOLIS CENTER 126.575 257.85	UNICOM 122.8 (CTAF) 0
----------------------------	--	---------------------------------



SE-1, 16 APR 2026 to 14 MAY 2026

SE-1, 16 APR 2026 to 14 MAY 2026

ELEV 1465	D	TDZE 1463
-----------	----------	-----------



CATEGORY	A	B	C	D
LPV DA		1722-1	259 (300-1)	
LNAV/VNAV DA		2120-1 7/8	657 (700-1 7/8)	
LNAV MDA	2120-1	657 (700-1)	2120-1 7/8	657 (700-1 7/8)
CIRCLING	2120-1 655 (700-1)	2180-1 715 (800-1)	2180-2 715 (800-2)	2460-3 995 (1000-3)

HIRL Rwy 9-27 **0**
REIL Rws 9 and 27 **0**