

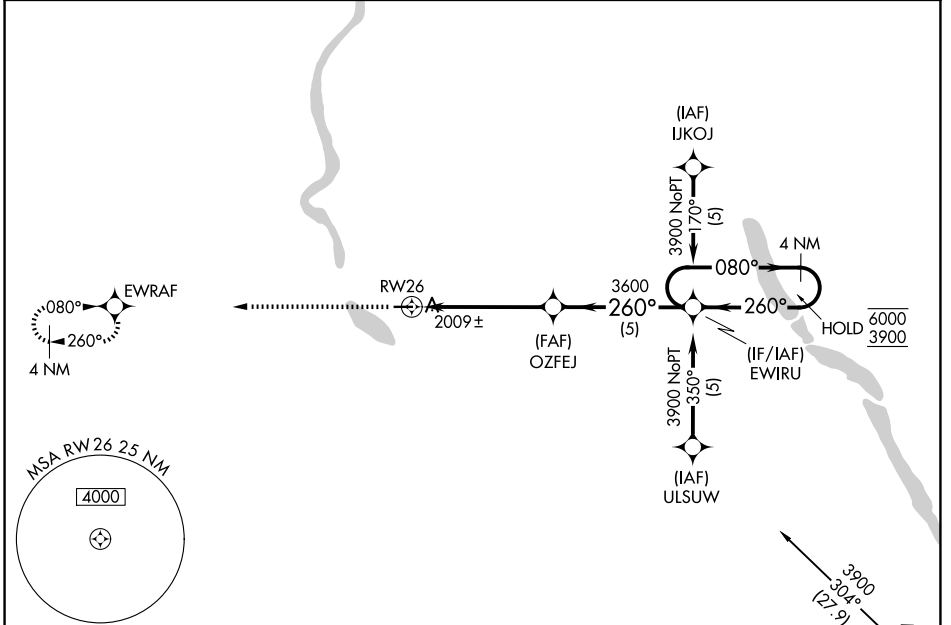
APP CRS	Rwy Ldg	3700
260°	TDZE	1960
	Apt Elev	1962

RNAV (GPS) RWY 26

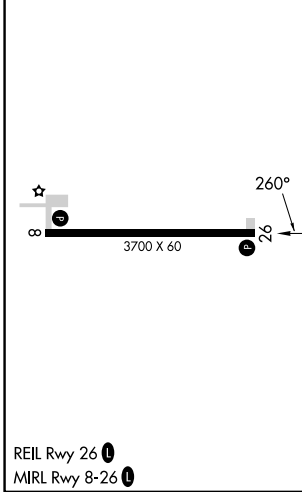
KENMARE MUNI (7K5)

RNP APCH.	Procedure NA at night. Use Minot Intl altimeter setting.	MISSED APPROACH: Climb to 4000 direct EWRAF and hold.
-----------	---	---

MOT ASOS 118.725	MINOT APP CON* 119.6 363.8	UNICOM 122.8 (CTAF) 0
----------------------------	--------------------------------------	---------------------------------



ELEV 1962	TDZE 1960
-----------	-----------



4000	EWRAF	VGSIs and descent angles not coincident (VGSIs Angle 3.00/TCH 30).	
		OZFEJ	EWIRU
			4 NM Holding Pattern
			6000 3900
			080°
			260°
			3600
			3.00° TCH 40
			5.1 NM
			5 NM
CATEGORY	A	B	C
LNAV MDA	2420-1	460 (500-1)	NA
CIRCLING	2660-1¼ 698 (700-1¼)	2660-1½ 698 (700-1½)	NA

NC-1, 16 APR 2026 to 14 MAY 2026

NC-1, 16 APR 2026 to 14 MAY 2026