

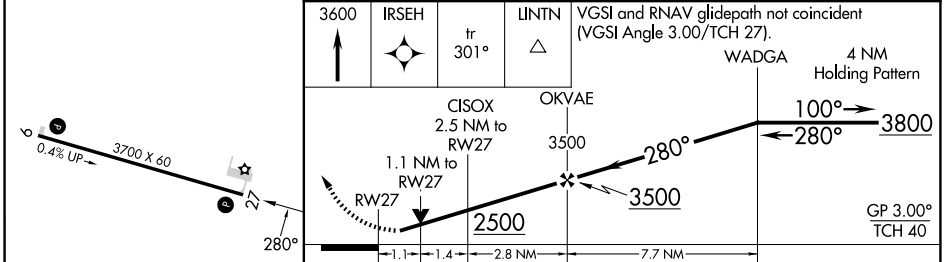
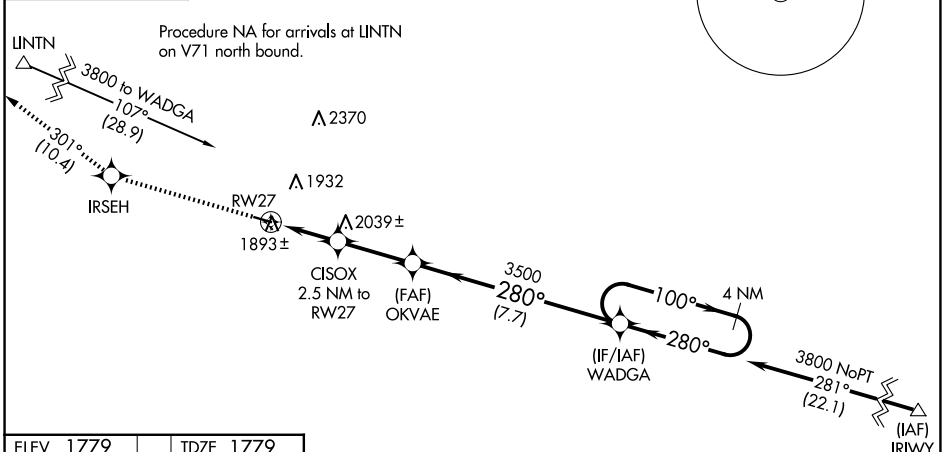
WAAS CH 86630 W27A	APP CRS 280°	Rwy Idg TDZE 1779 Apt Elev 1779	3700
--	------------------------	---	-------------

RNAV (GPS) RWY 27

LINTON MUNI (7L2)

RNP APCH - GPS.	<p>▼ For uncompensated Baro-VNAV systems, LNAV/VNAV NA below -18°C or above 54°C.</p> <p>▲ Rwy 27 helicopter visibility reduction below 3/4 SM NA. When local altimeter setting not received, use BIS altimeter setting and increase all DA 107 feet and visibility LPV and LNAV/VNAV all Cats 1/4 SM; increase all MDA 120 feet and visibility LNAV Cat C 1/4 SM. Baro-VNAV and VDP NA when using BIS altimeter setting.</p>	MISSED APPROACH: Climb to 3600 direct IRSEH and on track 301° to LINTN and hold.
-----------------	---	--

ASOS-3 118.175	MINNEAPOLIS CENTER 135.25 256.7	CTAF 122.9
--------------------------	---	----------------------



CATEGORY	A	B	C	D
LPV DA	2029-1 250 (300-1)			NA
LNAV/VNAV DA	2043-1 264 (300-1)			NA
LNAV MDA	2160-1	381 (400-1)	2160-1 1/8 381 (400-1 1/8)	NA

NC-1, 16 APR 2026 to 14 MAY 2026

NC-1, 16 APR 2026 to 14 MAY 2026