

WAAS CH 99630 W09A	APP CRS 100°	Rwy Idg TDZE Apt Elev	3700 1777 1779
--	------------------------	-----------------------------	---

RNAV (GPS) RWY 9

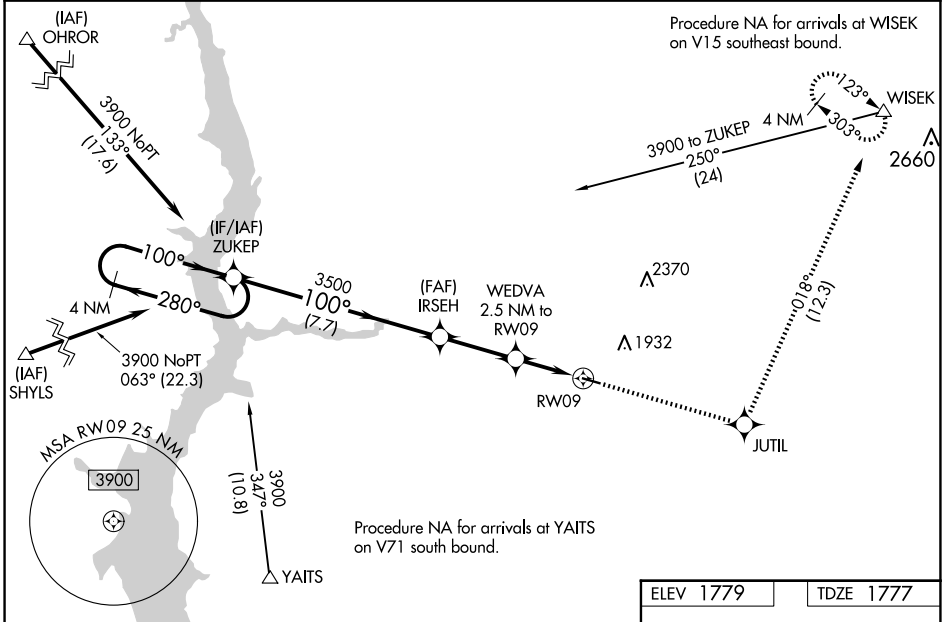
LINTON MUNI (7L2)

RNP APCH - GPS.

⚠ For uncompensated Baro-VNAV systems, LNAV/VNAV NA below -18°C or above 54°C. When local altimeter setting not received, use BIS altimeter setting and increase LPV DA to 2134 feet and all visibilities ¼ SM; increase LNAV/VNAV DA to 2198 and all visibilities ¼ SM. Increase all MDAs 120 feet and visibility LNAV Cat C ¼ SM and Circling Cat C ½ SM. Baro-VNAV and VDP NA when using BIS altimeter setting.

MISSED APPROACH: Climb to 4700 direct JUTIL and on track 018° to WISEK and hold.

ASOS-3 118.175	MINNEAPOLIS CENTER 135.25 256.7	CTAF 122.9
--------------------------	---	----------------------



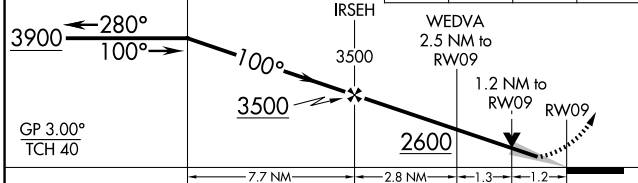
NC-1, 16 APR 2026 to 14 MAY 2026

NC-1, 16 APR 2026 to 14 MAY 2026

VGSI and RNAV glidepath not coincident (VGSI Angle 3.00/TCH 27).

4700	JUTIL	tr 018°	WISEK
------	-------	---------	-------

4 NM Holding Pattern ZUKEP



ELEV 1779	TDZE 1777
MIRL Rwy 9-27	

CATEGORY	A	B	C	D
LPV DA	2027-1	250 (300-1)		NA
LNAV/VNAV DA	2091-1	314 (400-1)		NA
LNAV MDA	2160-1	383 (400-1)	2160-1½ 383 (400-1½)	NA
CIRCLING	2320-1 541 (600-1)	2400-1 621 (700-1)	2440-1¾ 661 (700-1¾)	NA