

WAAS CH <b>86248</b> <b>W28A</b>	APP CRS <b>282°</b>	Rwy Ldg TDZE Apt Elev	<b>3900</b> <b>2242</b> <b>2250</b>
--	------------------------	-----------------------------	---

# RNAV (GPS) RWY 28

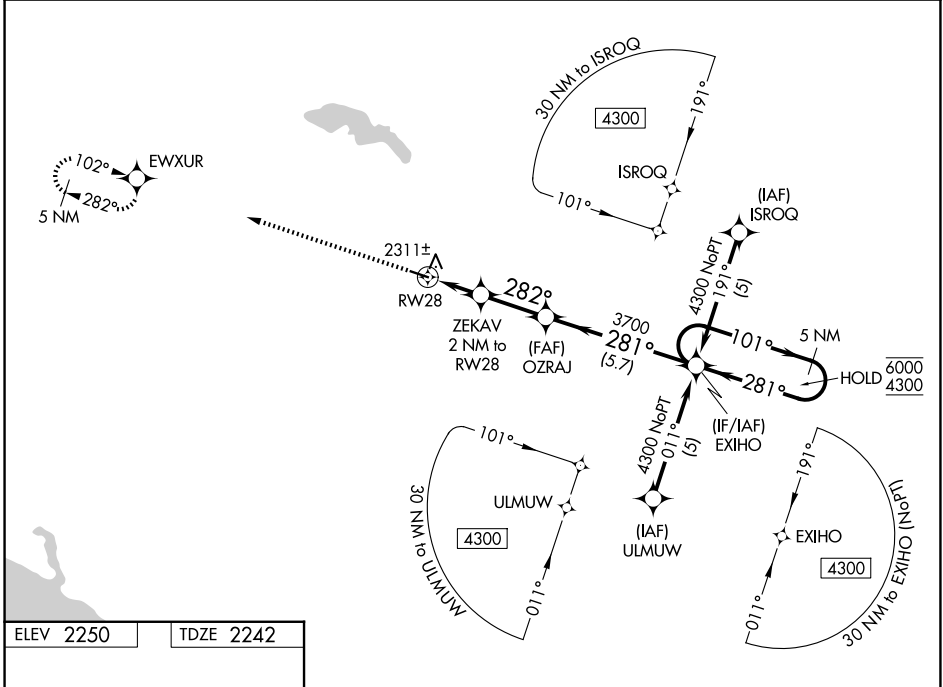
STANLEY MUNI (Ø8D)

RNP APCH - GPS.

**⚠** For uncompensated Baro-VNAV systems, LNAV/VNAV NA below -19°C or above 54°C. Rwy 28 helicopter visibility reduction below ¾ SM NA.

**MISSED APPROACH:** Climb to 5000 direct EWXUR and hold, continue climb-in-hold to 5000.

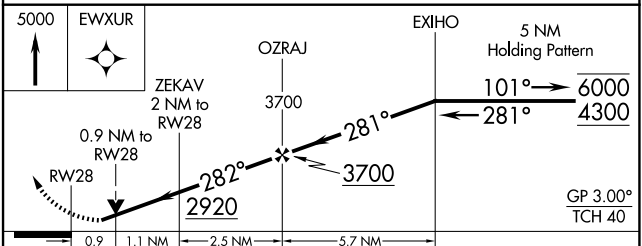
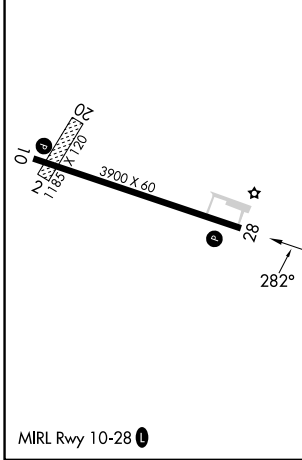
AWOS-3 <b>121.1</b>	MINNEAPOLIS CENTER <b>127.6 279.6</b>	CTAF <b>122.9</b> <b>⓪</b>
------------------------	--	-------------------------------



NC-1, 16 APR 2026 to 14 MAY 2026

NC-1, 16 APR 2026 to 14 MAY 2026

ELEV 2250	TDZE 2242
-----------	-----------



CATEGORY	A	B	C	D
LPV DA	2492-1	250 (300-1)		NA
LNAV/VNAV DA	2492-1	250 (300-1)		NA
LNAV MDA	2580-1	338 (400-1)		NA
CIRCLING	2720-1 470 (500-1)	2940-1 690 (700-1)		NA