

LOC/DME I-TTA <b>110.75</b> Chan 44 (Y)	APP CRS <b>029°</b>	Rwy Ldg TDZE Apt Elev	<b>6501</b> <b>247</b> <b>247</b>
---	------------------------	-----------------------------	---

# ILS Y or LOC Y RWY 3

RALEIGH EXEC JETPORT AT SANFORD-LEE COUNTY (TTA)

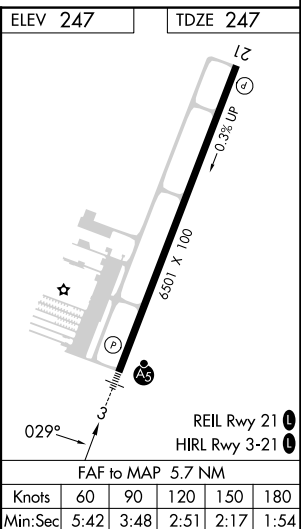
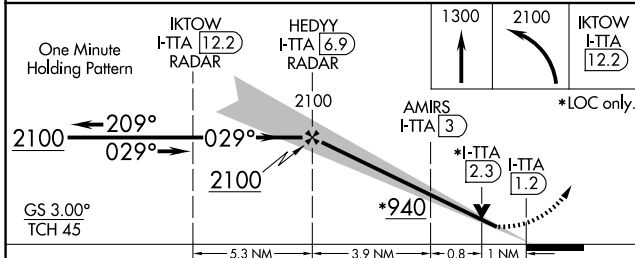
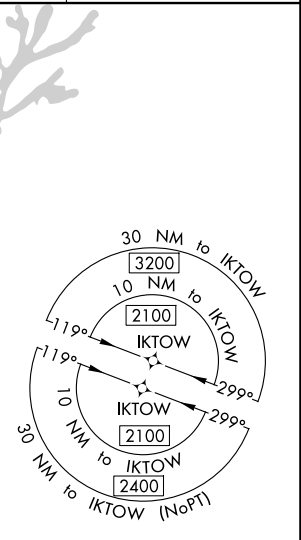
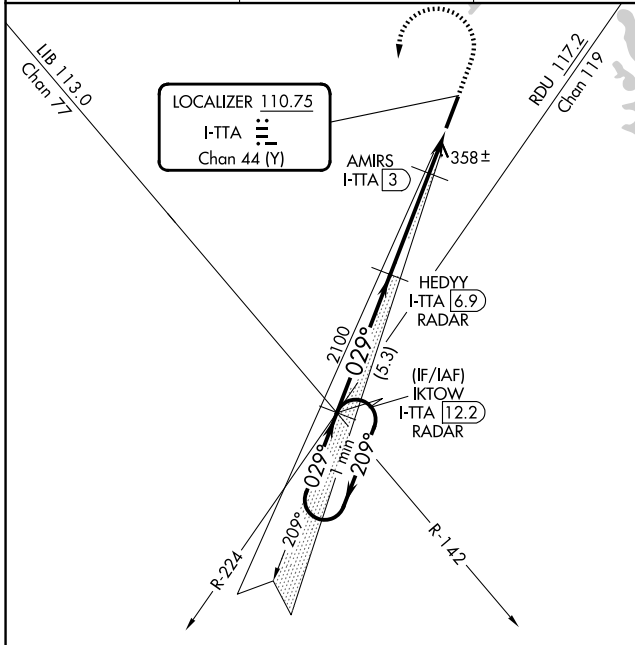
RNAV 1-GPS required.  
RNAV 1-GPS or RADAR required for procedure entry.

When local altimeter setting not received, use Raleigh/Durham altimeter setting: increase DA to 527 feet; increase all MDAs 100 feet and S-LOC 3 Cats C and D visibility to 1 SM and Circling Cat C visibility to 2 SM and Cat D to 2½ SM. For inop ALS, increase S-LOC 3 Cats C and D visibility to 1 SM. For inop ALS when using Raleigh/Durham altimeter setting, increase S-ILS 3 all Cats visibility to ¾ SM and increase S-LOC 3 Cats C and D visibility to 1½ SM. VDP NA when using Raleigh/Durham altimeter setting.

MALSR  
A5

MISSED APPROACH: Climb to 1300 then climbing left turn to 2100 direct IKTOW INT/I-TTA 12.2 DME/RADAR and hold.

AWOS-3 <b>120.625</b>	RALEIGH APP CON <b>125.3 353.675</b>	UNICOM <b>123.075 (CTAF) 0</b>	GC0 <b>135.075</b>
--------------------------	---	-----------------------------------	-----------------------



CATEGORY	A	B	C	D
S-ILS 3	447-½		200 (200-½)	
S-LOC 3	620-½	373 (400-½)	620-⅝	373 (400-⅝)
CIRCLING	760-1 513 (600-1)	820-1 573 (600-1)	840-1½ 593 (600-1½)	960-2¼ 713 (800-2¼)

Knots	60	90	120	150	180
Min:Sec	5:42	3:48	2:51	2:17	1:54

SE-2, 16 APR 2026 to 14 MAY 2026

SE-2, 16 APR 2026 to 14 MAY 2026