

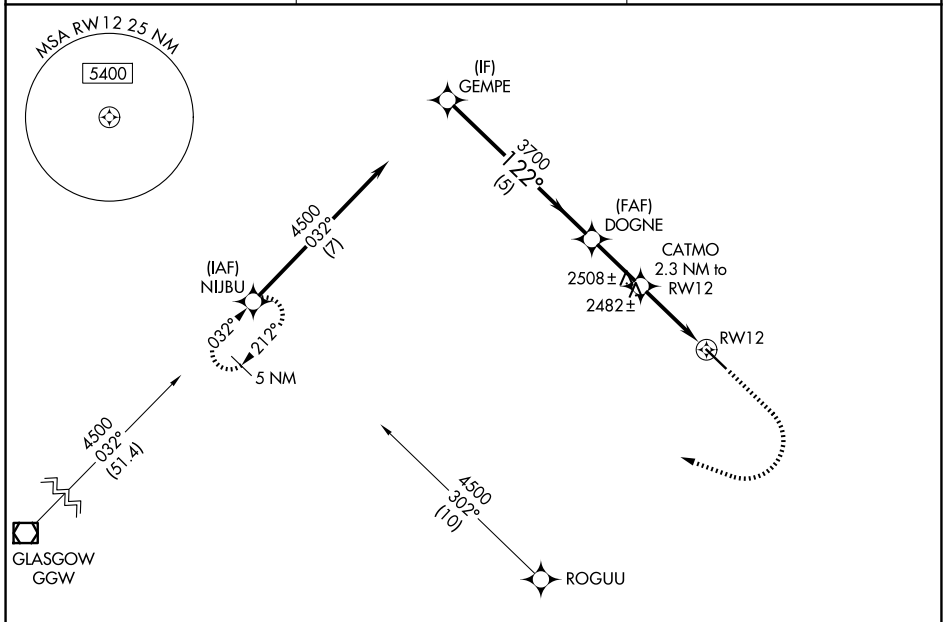
APP CRS 122°	Rwy Ldg TDZE Apt Elev	4020 2426 2434
------------------------	-----------------------------	-------------------------------------------

RNAV (GPS) RWY 12

SCOBEY (9S2)

RNP APCH - GPS.	MISSED APPROACH: Climb to 2900 then climbing right turn to 4500 direct NIJBU and hold.
<p>▼ VDP NA when using PWD altimeter setting. Circling Rwy 30</p> <p>▲ NA at night. When local altimeter setting not received, use PWD altimeter setting and increase all MDAs 120 feet.</p>	

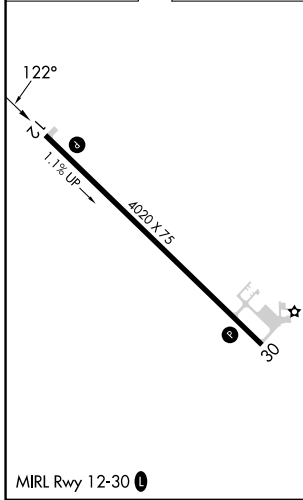
AWOS-3PT 128.325	SALT LAKE CITY CENTER 126.85 305.2	AUNICOM 122.8 (CTAF)
----------------------------	----------------------------------------------	--------------------------------



NW-1, 16 APR 2026 to 14 MAY 2026

NW-1, 16 APR 2026 to 14 MAY 2026

ELEV 2434	TDZE 2426
-----------	-----------



VGSi and descent angles not coincident (VGSi Angle 3.00/TCH 25). DOGNE CATMO 2.3 NM to RW12 1 NM to RW12 RW12			
4500	3700	3160	2900
5 NM 1.7 NM 1.3 NM 1 NM			
GEMPE 4500	DOGNE 3700	CATMO 3160	NIJBU 2900
CATEGORY A	B	C	D
LNAV MDA 2740-1	314 (400-1)	NA	
CIRCLING 2940-1	506 (600-1)	NA	