

# RNAV (GPS) Y RWY 18

PICAYUNE MUNI (MJD)

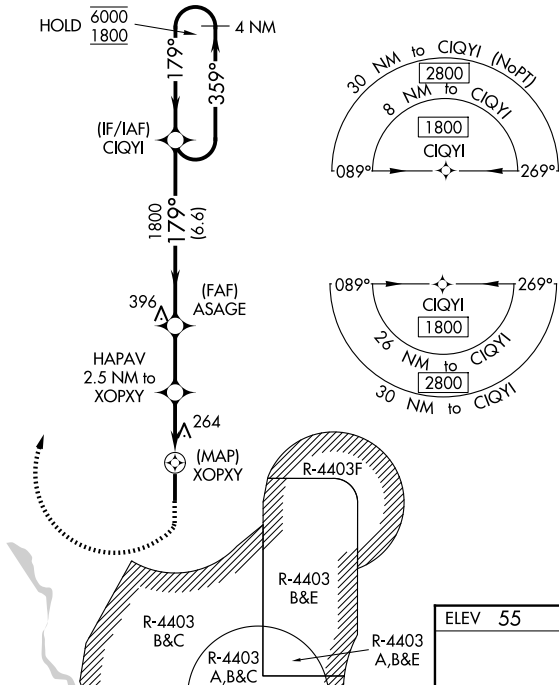
WAAS CH <b>42938</b> <b>W18A</b>	APP CRS <b>179°</b>	Rwy Ldg <b>5000</b> TDZE <b>55</b> Apt Elev <b>55</b>
--	------------------------	---

RNP APCH.

**⚠** Baro-VNAV and VDP NA when using Stennis Intl altimeter setting. Rwy 18 helicopter visibility reduction below  $\frac{3}{4}$  SM NA. For uncompensated Baro-VNAV systems, LNAV/VNAV NA below -15°C or above 5°C. When local altimeter setting not received, use Stennis Intl altimeter setting: increase LPV DA to 377 and visibility all Cats  $\frac{1}{8}$  mile; increase LNAV/VNAV DA to 621 and visibility all Cats  $\frac{1}{8}$  mile; increase all MDA 40 feet. Procedure NA when R-4403 B/C/E is active.

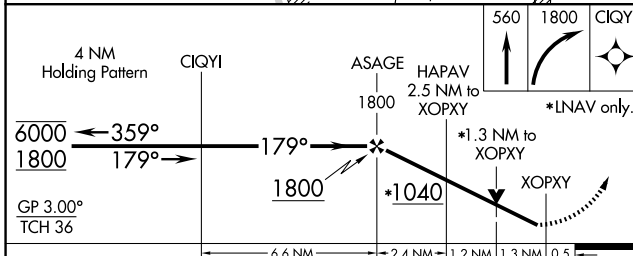
MISSED APPROACH: (Do not exceed 185K) Climb to 560 then climbing right turn to 1800 direct CIQYI and hold.

AWOS-3PT <b>119.075</b>	GULFPORT APP CON * <b>124.6 354.1</b>	UNICOM <b>122.8 (CTAF) ①</b>
----------------------------	--	---------------------------------



SC-4, 16 APR 2026 to 14 MAY 2026

SC-4, 16 APR 2026 to 14 MAY 2026



ELEV 55	TDZE 55
---------	---------

MIRL Rwy 18-36 ①

CATEGORY	A	B	C	D
LPV DA	343-1		288 (300-1)	
LNAV/VNAV DA	587-1 $\frac{7}{8}$		532 (600-1 $\frac{7}{8}$ )	
LNAV MDA	520-1	465 (500-1)	520-1 $\frac{3}{8}$	465 (500-1 $\frac{3}{8}$ )
CIRCLING	520-1 465 (500-1)	580-1 525 (600-1)	NA	