

WAAS CH <b>61031</b> <b>W09A</b>	APP CRS <b>086°</b>	Rwy Ldg TDZE Apt Elev	<b>4502</b> <b>6046</b> <b>6056</b>
--	------------------------	-----------------------------	---

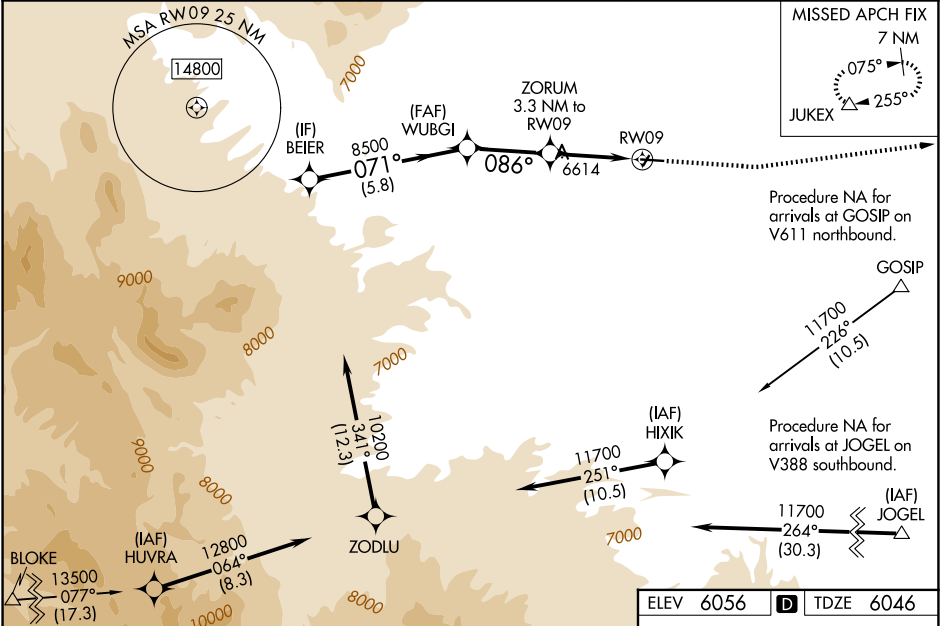
# RNAV (GPS) RWY 9

SPANISH PEAKS AIRFIELD (4V1)

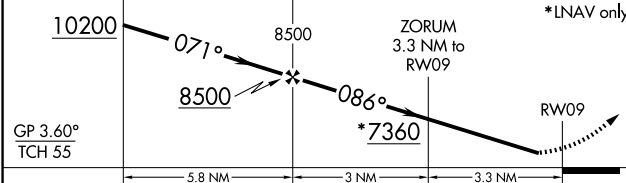
**Baro-VNAV NA** when using Trinidad altimeter setting. For uncompensated Baro-VNAV systems, procedure NA below -26°C (-14°F) or above 36°C (98°F). DME/DME RNP-0.3 NA. Helicopter visibility reduction below 1 SM NA.  
**NA** Rwy 9 Straight-in and Circling minimums NA at night. When local altimeter setting not received, use Trinidad altimeter setting and increase all DA 119 feet and MDA 120 feet; increase LPV all Cats visibility 1/8 mile and LNAV/VNAV all Cats visibility 3/8 mile, LNAV Cats A-B and Circling Cat B visibility 1/4 mile, LNAV Cat C visibility 1/2 mile.

**MISSED APPROACH:**  
 Climb to 6900 then climbing left turn to 9400 direct JUKEX and hold.

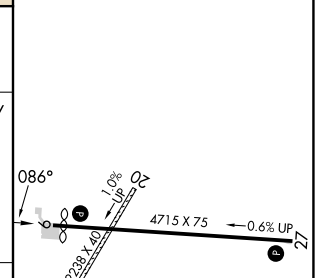
AWOS-3PT <b>123.6</b>	DENVER CENTER <b>128.375 379.95</b>	UNICOM <b>122.8 (CTAF)</b> <b>0</b>
--------------------------	--	--



VGSI and RNAV glidepath not coincident (VGSI Angle 3.00/TCH 45).  
 6900 9400 JUKEX  
 \*LNAV only



ELEV 6056	<b>D</b> TDZE 6046
-----------	--------------------



CATEGORY	A	B	C	D
LPV DA	6347-1 301 (300-1)			NA
LNAV/VNAV DA	6606-1 5/8 560 (600-1 5/8)			NA
LNAV MDA	6880-1 834 (900-1)	6880-1 1/4 834 (900-1 1/4)	6880-2 1/2 834 (900-2 1/2)	NA
CIRCLING	6880-1 1/4 824 (900-1 1/4)		7080-3 1024 (1100-3)	NA

MIRL Rwy 9-27 **0**

SW-1, 16 APR 2026 to 14 MAY 2026

SW-1, 16 APR 2026 to 14 MAY 2026