

WAAS CH <b>86241</b> <b>W20A</b>	APP CRS <b>203°</b>	Rwy Ldg TDZE Apt Elev	<b>4740</b> <b>777</b> <b>777</b>
--	------------------------	-----------------------------	---

# RNAV (GPS) RWY 20

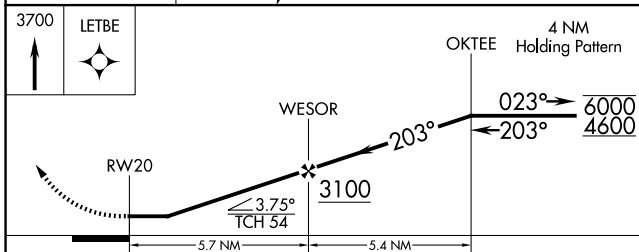
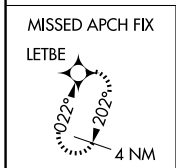
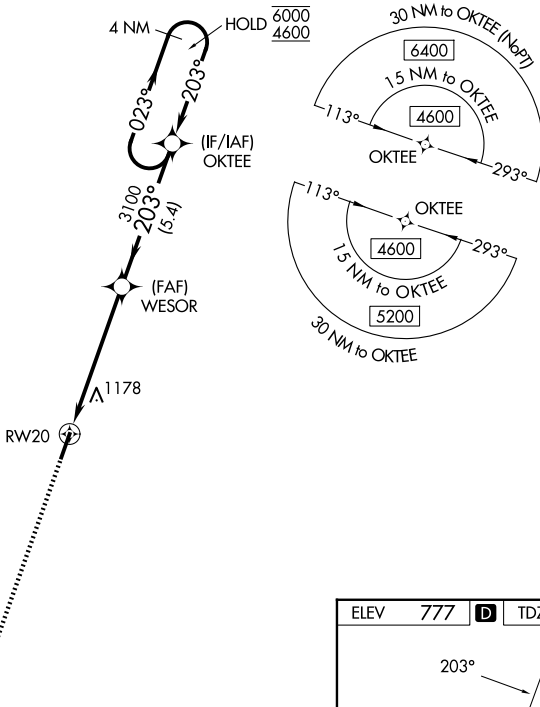
BARWICK LAFAYETTE (9A.5)

RNP APCH - GPS.

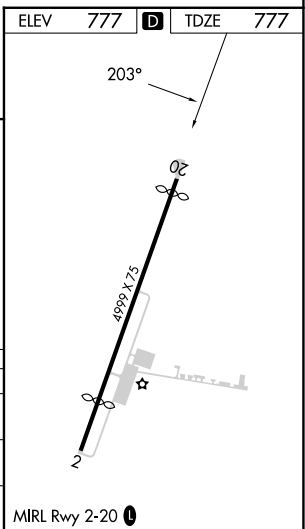
**⚠** Procedure NA at night. Rwy 20 helicopter visibility reduction below 1 SM NA.  
**⚠** When local altimeter setting not received, use CHA altimeter setting and increase all MDAs 80 feet.

MISSED APPROACH: Climb to 3700 direct LETBE and hold, continue climb-in-hold to 3700.

AWOS-3 <b>119.775</b>	CHATTANOOGA APP CON * <b>125.1 379.1</b>	UNICOM <b>122.8 (CTAF) 0</b>
--------------------------	---	---------------------------------



CATEGORY	A	B	C	D
LP MDA	1400-1 623 (700-1)		NA	
LNAV MDA	1440-1 663 (700-1)		NA	
CIRCLING	1660-1¼ 883 (900-1¼)		NA	



SE-4, 16 APR 2026 to 14 MAY 2026

SE-4, 16 APR 2026 to 14 MAY 2026