

APP CRS 009°	Rwy Ldg TDZE Apt Elev	N/A N/A 4044
------------------------	-----------------------------	---

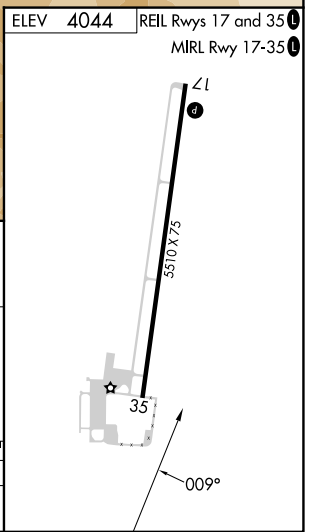
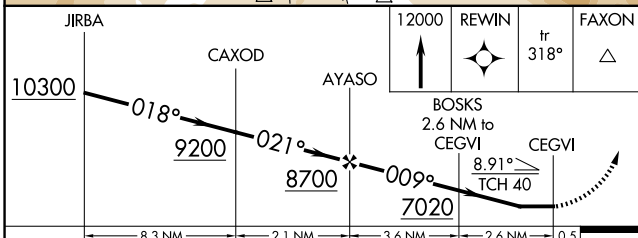
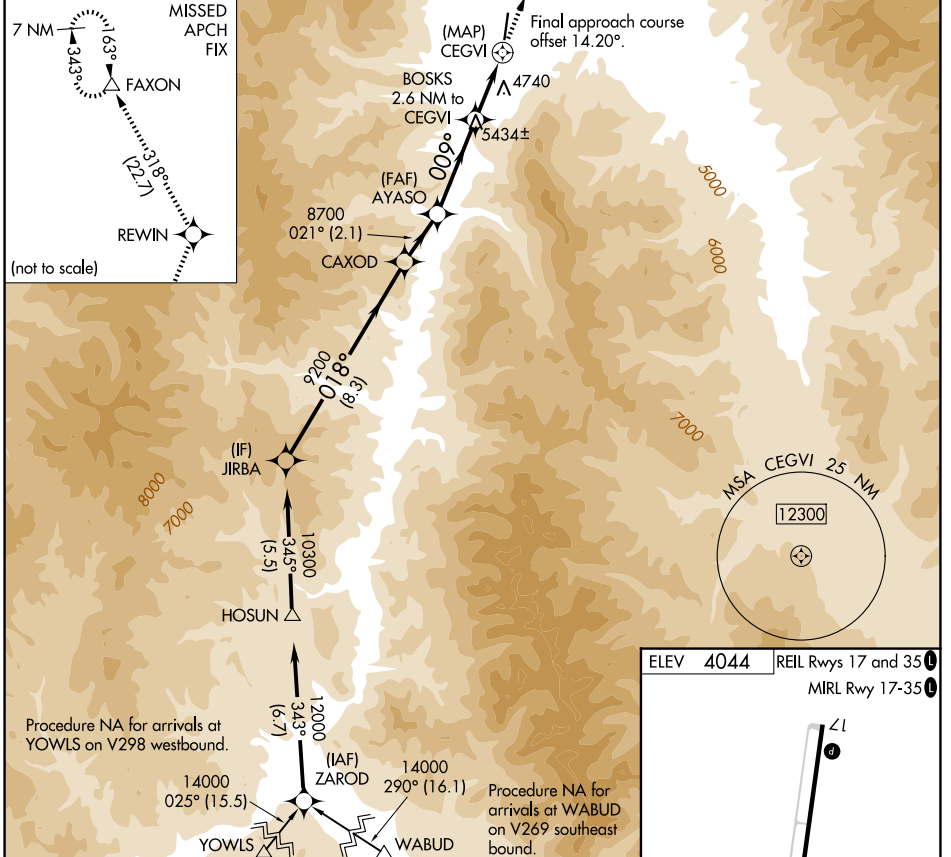
RNAV (GPS)-D

LEMHI COUNTY (SMN)

NA Circling Rwy 35 NA at night.
NA DME/DME RNP-0.3 NA.
-12°C Circling NA for Cat C east of Rwy 17-35.

MISSED APPROACH: Climb to 12000 direct REWIN and on track 318° to FAXON and hold, continue climb-in-hold to 12000.

AWOS-3PT 135.075	SALT LAKE CENTER 132.4 338.3	UNICOM 122.8(CTAF) 0
----------------------------	--	--------------------------------



CATEGORY	A	B	C	D
CIRCLING	6000-1¼ 1956 (2000-1¼)	6000-1½ 1956 (2000-1½)	6220-3 2176 (2200-3)	NA

NW-1, 16 APR 2026 to 14 MAY 2026

NW-1, 16 APR 2026 to 14 MAY 2026