

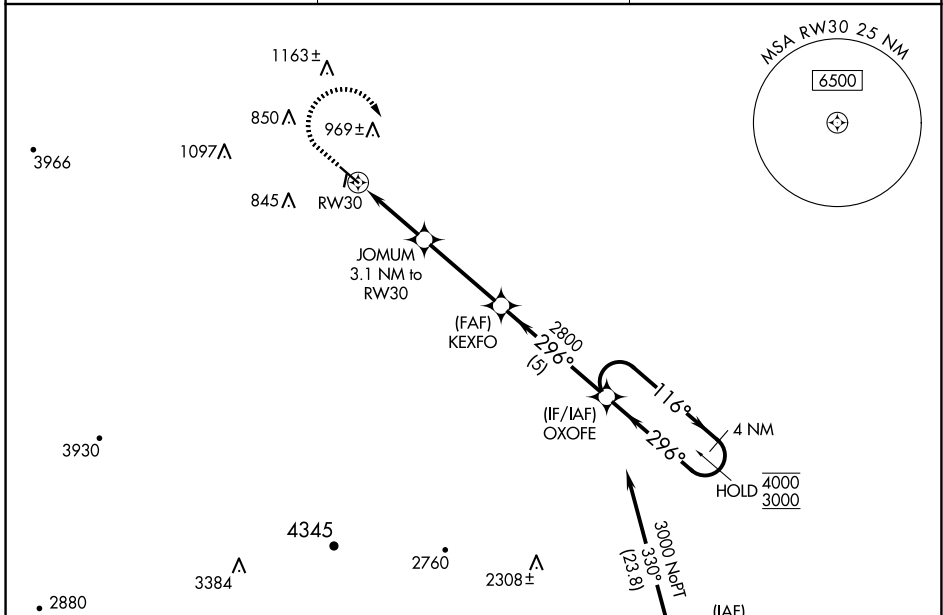
WAAS CH 69544 W30A	APP CRS 296°	Rwy Idg TDZE Apt Elev	5000 610 625
--	------------------------	-----------------------------	---

RNAV (GPS) RWY 30

NEW COALINGA MUNI (C80)

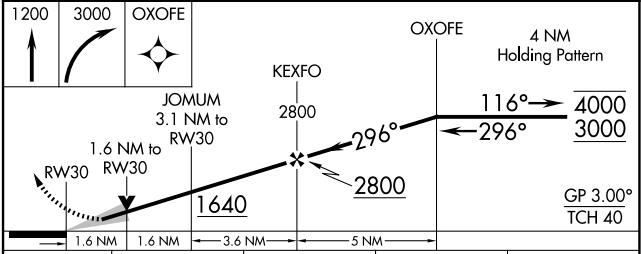
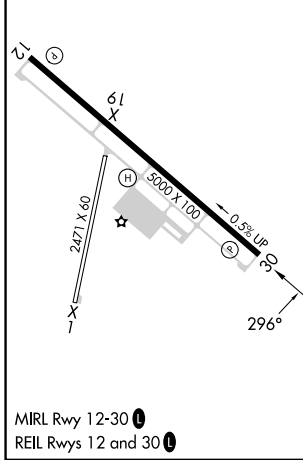
RNP APCH - GPS.	<p>⚠ Circling to Rwy 1, 19 NA at night. For uncompensated Baro-VNAV systems, LNAV/VNAV NA below -16°C or above 54°C.</p>	<p>MISSED APPROACH: Climb to 1200, then climbing right turn to 3000 direct OXOFE and hold.</p>
-----------------	---	--

AWOS-3 119.275	OAKLAND CENTER 128.7 307.0	UNICOM 122.7 (CTAF) 0
--------------------------	--------------------------------------	---------------------------------



ELEV 625	TDZE 610
----------	----------

Procedure NA for arrival on AVE VOR/DME
airway radials 257 CW 313.



CATEGORY	A	B	C	D
LPV DA	936-1 326 (400-1)			
LNAV/VNAV DA	1030-1½ 420 (500-1½)			
LNAV MDA	1140-1	530 (600-1)	1140-1½	530 (600-1½)
CIRCLING	1160-1 535 (600-1)	1320-1 695 (700-1)	1420-2¼ 795 (800-2¼)	1700-3 1075 (1100-3)

SW-2, 16 APR 2026 to 14 MAY 2026

SW-2, 16 APR 2026 to 14 MAY 2026