

| | | | |
|--|------------------------|-----------------------------|---|
| WAAS CH 60912 W35A | APP CRS 347° | Rwy Idg TDZE Apt Elev | 8500 194 194 |
|--|------------------------|-----------------------------|---|

RNAV (GPS) RWY 35

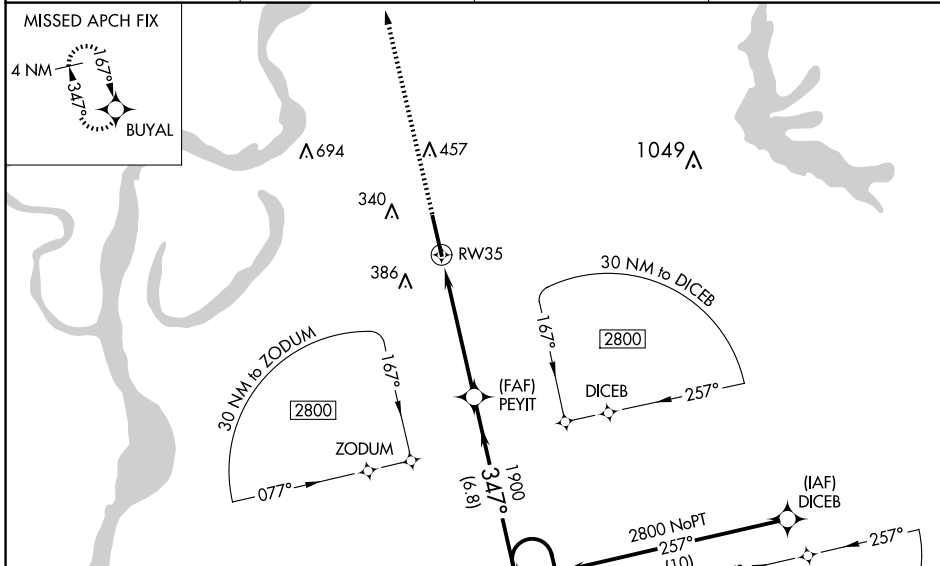
TUNICA MUNI (UTA)

For uncompensated Baro-VNAV systems, LNAV/VNAV NA below -15°C (5°F) or above 42°C (107°F). For inop MALSRL, increase LNAV/VNAV all Cats visibility to ¾ mile. DME/DME RNP-0.3 NA. Baro-VNAV and VDP NA when using Memphis altimeter setting. When local altimeter setting not received, use Memphis altimeter setting and increase LPV DA to 480, LNAV/VNAV DA to 530, and all MDA 100 feet; increase LNAV/VNAV visibility all Cats ½ mile, increase LNAV Cat C, D and Circling Cat C visibility ¼ mile. For inop MALSRL when using Memphis altimeter setting, increase LPV all Cats visibility to ¾ mile.

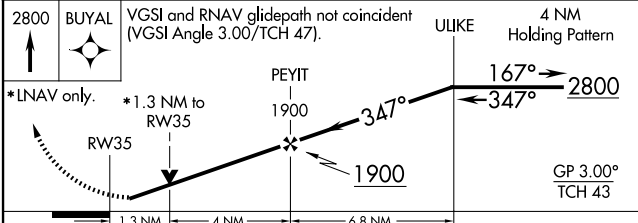
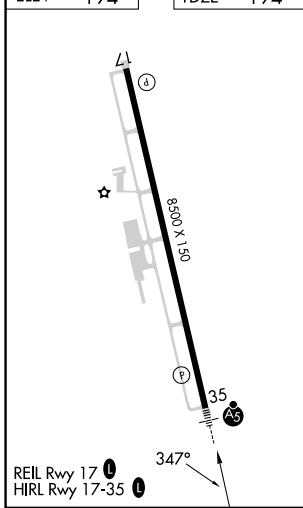


MISSED APPROACH:
Climb to 2800 direct BUYAL and hold.

| | | | |
|--------------------------|---------------------------------------|--------------------------|---------------------------------|
| AWOS-3 118.075 | MEMPHIS APP CON 119.1 291.6 | CLNC DEL 118.9 | UNICOM 123.0 (CTAF) 0 |
|--------------------------|---------------------------------------|--------------------------|---------------------------------|



| | |
|----------|----------|
| ELEV 194 | TDZE 194 |
|----------|----------|



| CATEGORY | A | B | C | D |
|--------------|-------------------|-------------|--------------|---------------|
| LPV DA | 394-½ 200 (200-½) | | | |
| LNAV/VNAV DA | 444-½ 250 (300-½) | | | |
| LNAV MDA | 640-½ | 446 (500-½) | 640-7/8 | 446 (500-7/8) |
| CIRCLING | 680-1 | 740-1 | 760-1½ | 760-2 |
| | 486 (500-1) | 546 (600-1) | 566 (600-1½) | 566 (600-2) |

SC-4, 16 APR 2026 to 14 MAY 2026

SC-4, 16 APR 2026 to 14 MAY 2026