

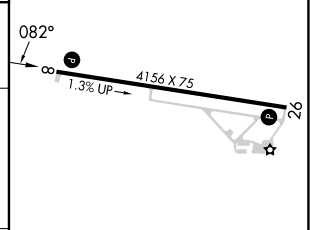
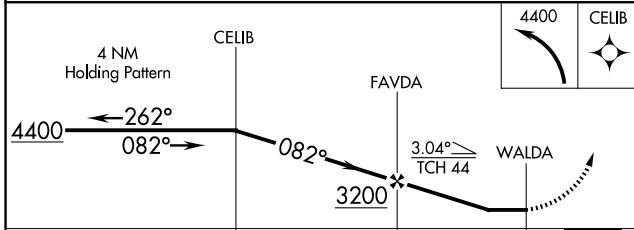
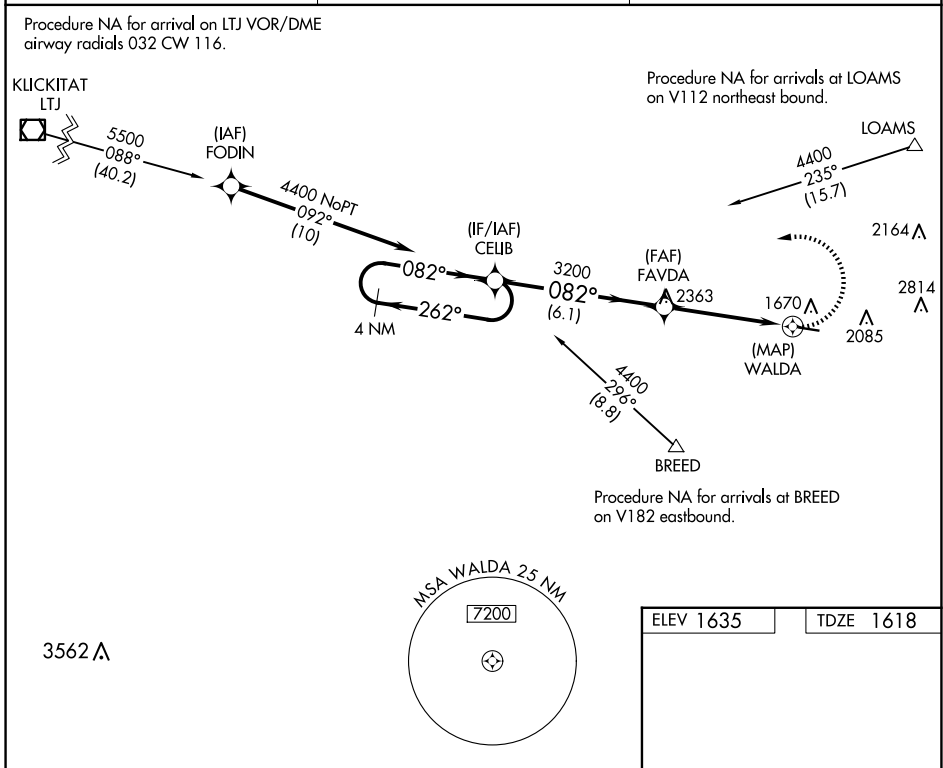
APP CRS	Rwy Idg	<b>4156</b>
<b>082°</b>	TDZE	<b>1618</b>
	Apt Elev	<b>1635</b>

# RNAV (GPS) RWY 8

LEXINGTON (9S9)

RNP APCH - GPS.		MISSED APPROACH: Climbing left turn to 4400 direct CELIB and hold.
<b>⚠</b> NA	Circling Cat D NA when using HRI altimeter setting. When local altimeter not received, use HRI altimeter setting and increase all MDAs 220 feet and LNAV visibility Cat C ½ SM, and Circling visibility Cats A and B ¼ SM. Procedure NA at night. Rwy 8 helicopter visibility reduction below 1 SM NA.	

AWOS-3 <b>134.475</b>	SEATTLE CENTER <b>132.6 269.35</b>	CTAF <b>122.9 0</b>
--------------------------	---------------------------------------	------------------------



CATEGORY	A	B	C	D	
LNAV MDA	2120-1	502 (500-1)	2120-1½	502 (500-1½)	
CIRCLING	2380-1 745 (800-1)	2460-1¼ 825 (900-1¼)	2700-3 1065 (1100-3)	3180-3 1545 (1600-3)	MIRL Rwy 8-26 0 REIL Rws 8 and 26 0

NW-1, 16 APR 2026 to 14 MAY 2026

NW-1, 16 APR 2026 to 14 MAY 2026