

APP CRS	Rwy Idg	N/A
<b>210°</b>	TDZE	N/A
	Apt Elev	<b>1635</b>

# RNAV (GPS)-A

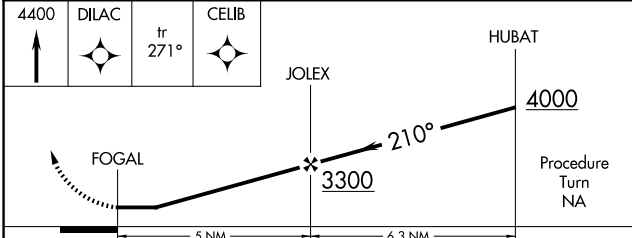
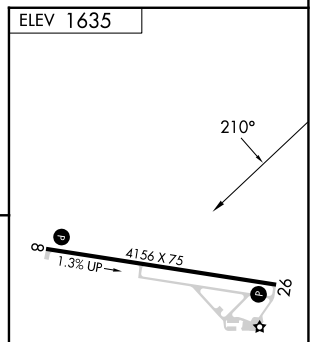
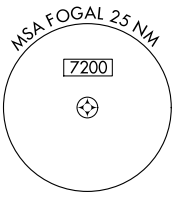
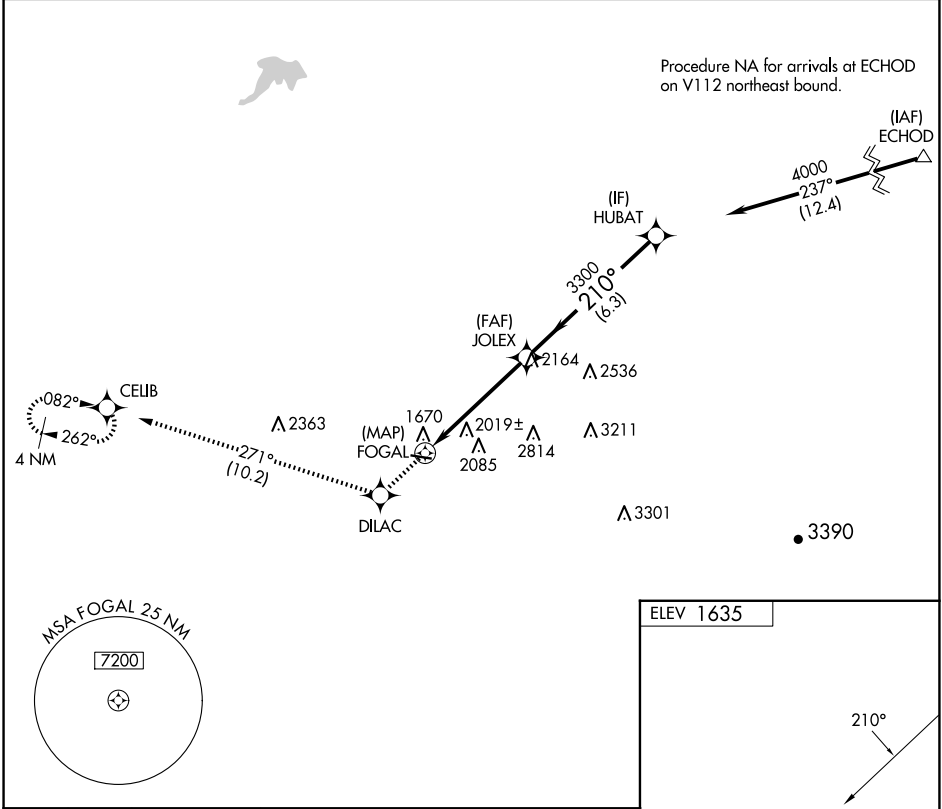
LEXINGTON (9S9)

RNP APCH - GPS.

**NA** Circling Cat D NA when using HRI altimeter setting. When local altimeter not received, use HRI altimeter setting and increase all MDAs 220 feet and Circling visibility Cats A and B ¼ SM. Procedure NA at night. Rwy 8 and 26 helicopter visibility reduction below 1 SM NA.

MISSED APPROACH: Climb to 4400 direct DILAC and on 271° track to CELIB and hold.

AWOS-3 <b>134.475</b>	SEATTLE CENTER <b>132.6 269.35</b>	CTAF <b>122.9</b>
--------------------------	---------------------------------------	----------------------



CATEGORY	A	B	C	D
CIRCLING	2380-1 745 (800-1)	2460-1¼ 825 (900-1¼)	2700-3 1065 (1100-3)	3180-3 1545 (1600-3)

MIRL Rwy 8-26  
REIL Rwys 8 and 26

NW-1, 16 APR 2026 to 14 MAY 2026

NW-1, 16 APR 2026 to 14 MAY 2026