

WAAS CH 81936 W01A	APP CRS 007°	Rwy Ldg 4199 TDZE 492 Apt Elev 492
----------------------------------------	------------------------	---------------------------------------------------------------

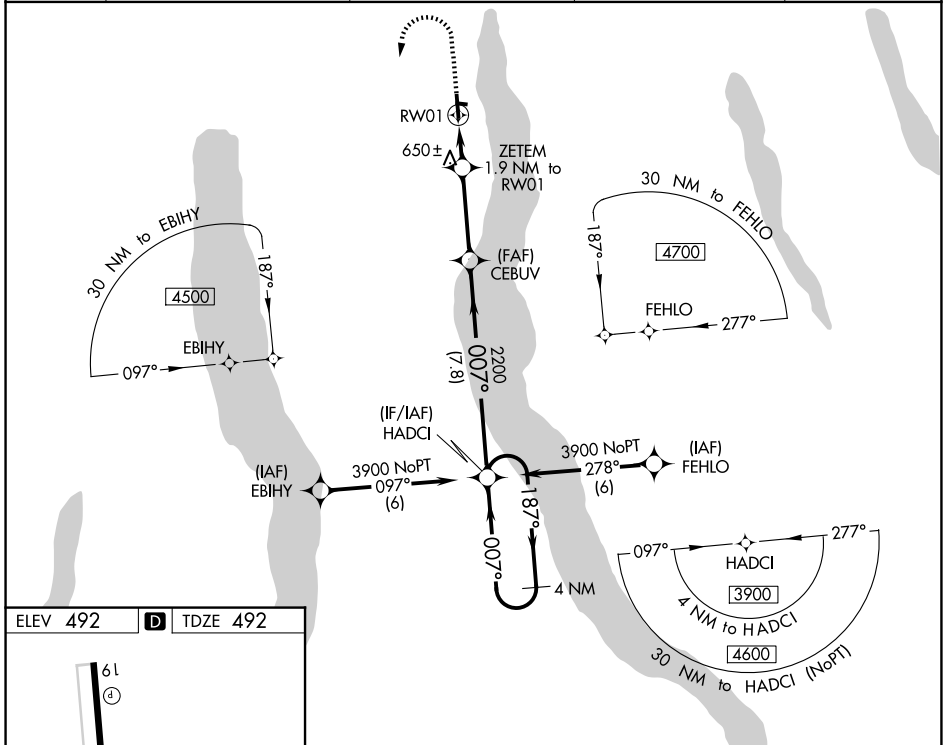
RNAV (GPS) RWY 1

FINGER LAKES RGNL (ØG7)

▽ For uncompensated Baro-VNAV systems, LNAV/VNAV NA below -15°C (5°F) or above 54°C (130°F). Baro-VNAV and VDP NA when using Syracuse altimeter setting. Rwy 1 helicopter visibility reduction below 3/4 SM NA. DME/DME RNP-0.3 NA. When local altimeter setting not received, use Syracuse altimeter setting and increase all DA 86 feet and all visibility 1/4 SM, increase all MDA 100 feet.

△ NA MISSED APPROACH: Climb to 1000 then climbing left turn to 3900 direct HADCI and hold, continue climb-in-hold to 3900.

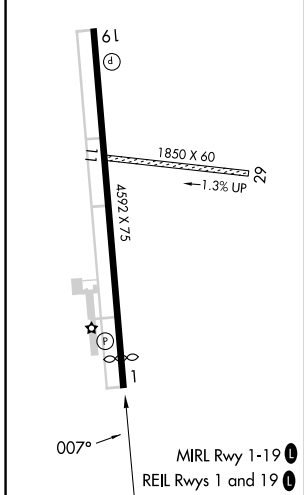
AWOS-3 120.0	SYRACUSE APP CON 126.125 269.125	ROCHESTER APP CON 119.55 269.6 (W-NW)	ELMIRA APP CON ★ 124.3 257.8 (SW-SE)	UNICOM 122.8 (CTAF) Ø
------------------------	--------------------------------------------	-------------------------------------------------	------------------------------------------------	----------------------------------------



NE-2, 16 APR 2026 to 14 MAY 2026

NE-2, 16 APR 2026 to 14 MAY 2026

ELEV 492	D	TDZE 492
-----------------	----------	-----------------



1000	3900	HADCI	4 NM Holding Pattern	
<p>* LNAV only * 1.2 NM to 1.9 NM to RW01</p>		ZETEM 2200	CEBUV 2200	HADCI 3900
<p>1.2 NM</p>		<p>0.7 NM</p>	<p>3.3 NM</p>	<p>7.8 NM</p>
CATEGORY	A	B	C	D
LPV DA	742-7/8	250 (300-7/8)		NA
LNAV/VNAV DA	959-1 1/8	467 (500-1 1/8)		NA
LNAV MDA	900-1	408 (500-1)		NA
CIRCLING	980-1 488 (500-1)	1180-1 688 (700-1)		NA