

WAAS CH <b>97335</b> <b>W05A</b>	APP CRS <b>053°</b>	Rwy Ldg TDZE Apt Elev	<b>3508</b> <b>604</b> <b>610</b>
--	------------------------	-----------------------------	---

# RNAV (GPS) RWY 5

UNION COUNTY, TROY SHELTON FLD (35A)

RNP APCH.

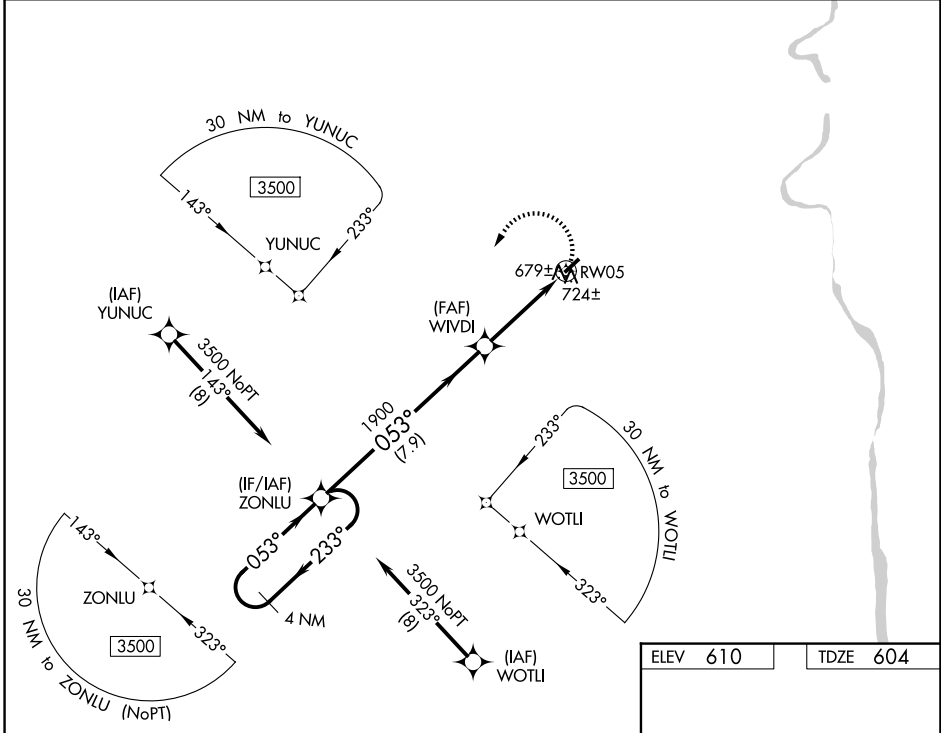
When local altimeter setting not received, use Laurens altimeter setting.  
 Procedure NA at night. Rwy 5 helicopter visibility reduction below 1 SM NA.

MISSED APPROACH: Climbing left turn to 3500 direct ZONLU and hold.

AWOS-3PT  
**119.45**

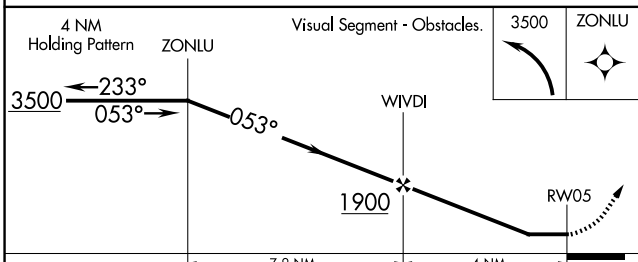
GREER APP CON ★  
**119.4 350.2**

UNICOM  
**122.7 (CTAF) 0**



SE-2, 16 APR 2026 to 14 MAY 2026

SE-2, 16 APR 2026 to 14 MAY 2026



ELEV 610	TDZE 604
----------	----------

CATEGORY	A	B	C	D
LP MDA	1000-1	396 (400-1)		NA
LNAV MDA	1040-1	436 (500-1)		NA
CIRCLING	1180-1	570 (600-1)		NA

