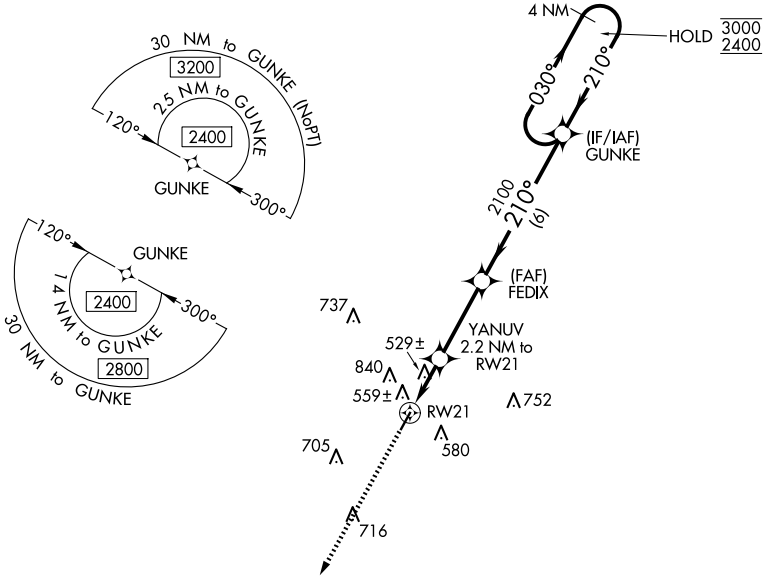


WAAS CH <b>53431</b> <b>W21A</b>	APP CRS <b>210°</b>	Rwy Idg TDZE Apt Elev	<b>4000</b> <b>364</b> <b>364</b>
--	------------------------	-----------------------------	---

**RNAV (GPS) RWY 21**  
WINONA-MONTGOMERY COUNTY (5A6)

RNP APCH - GPS.	<p>▼ Rwy 21 helicopter visibility reduction below 1 SM NA.                  ▲ NA Procedure NA at night. Circling NA northwest of Rwy 3-21.                  When local altimeter setting not received, use GNF altimeter setting.</p>	MISSED APPROACH: Climb to 2500 direct GUCEY and hold.
-----------------	---	---

AWOS-3PT <b>120.175</b>	MEMPHIS CENTER <b>128.5 279.55</b>	CTAF <b>122.9 0</b>
----------------------------	---------------------------------------	------------------------



SC-4, 16 APR 2026 to 14 MAY 2026

SC-4, 16 APR 2026 to 14 MAY 2026

ELEV 364	TDZE 364
----------	----------

MIRL Rwy 3-21 0

	<p>2500 GUCEY</p>	<p>VGSI and descent angles not coincident (VGSI Angle 4.00/TCH 30).</p>	<p>4 NM Holding Pattern</p>	
	<p>YANUV 2.2 NM to RWY 21</p>	<p>FEDIX</p>	<p>GUNKE</p>	
<p>1080</p>	<p>2100</p>	<p>210°</p>	<p>030° → 3000 ← 210° 2400</p>	
<p>2.2 NM</p>	<p>3.2 NM</p>	<p>6 NM</p>		
CATEGORY	A	B	C	D
LP MDA	860-1	496 (500-1)	860-1 <sup>3</sup> / <sub>8</sub> 496 (500-1 <sup>3</sup> / <sub>8</sub> )	NA
LNAV MDA	900-1	536 (600-1)	900-1 <sup>1</sup> / <sub>2</sub> 536 (600-1 <sup>1</sup> / <sub>2</sub> )	NA
CIRCLING	960-1	596 (600-1)	1100-2 736 (800-2)	NA