

WAAS CH 97725 W27A	APP CRS 274°	Rwy Ldg TDZE Apt Elev	3541 288 289
----------------------------------------	------------------------	-----------------------------	-----------------------------------------

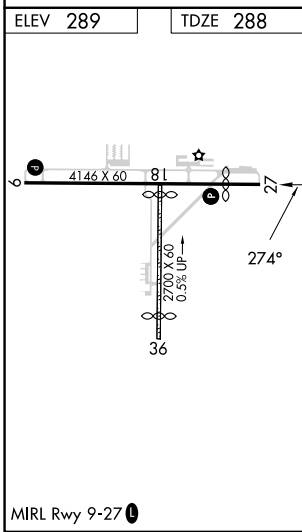
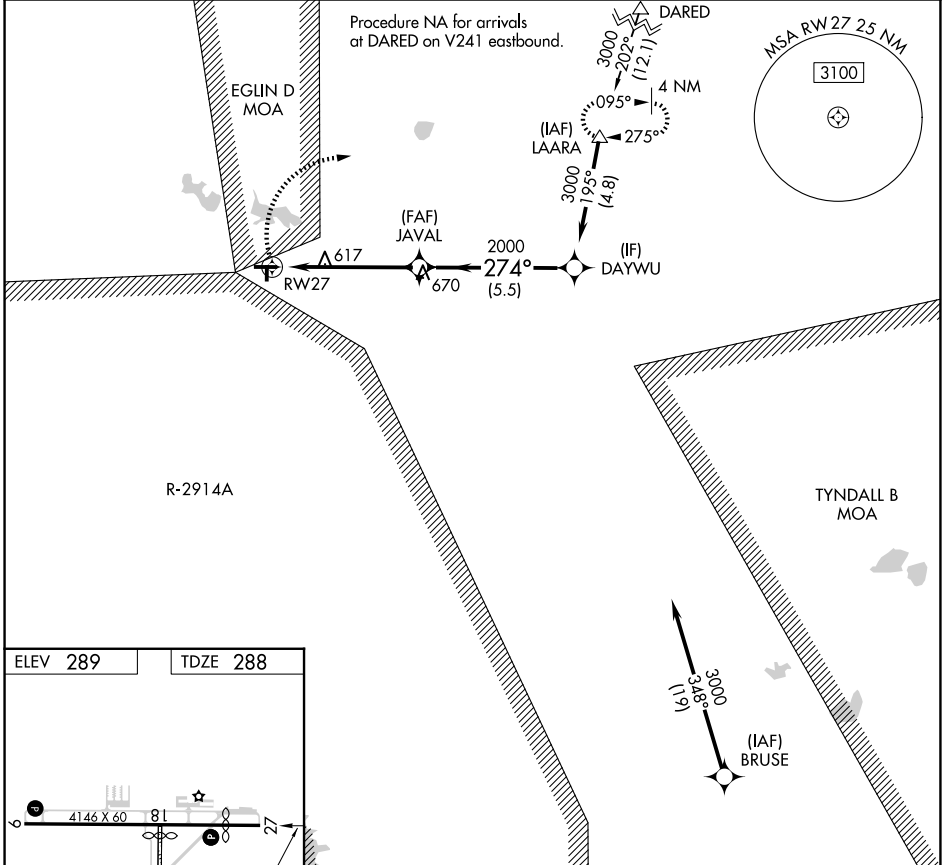
RNAV (GPS) RWY 27

DEFUNIAK SPRINGS (54J)

RNP APCH.
 ⚠ Circling NA to Rwy 18 and 36. Circling Rwy 9 NA at night.
 ⚠ Rwy 27 helicopter visibility reduction below $\frac{3}{4}$ SM NA.

MISSED APPROACH: Climbing right turn to 3000 direct LAARA and hold.

AWOS-3P 118.725	EGLIN APP CON 124.05 284.65	UNICOM 123.05 (CTAF) 0
---------------------------	---------------------------------------	----------------------------------



3000	LAARA	Visual Segment - Obstacles.	DAYWU
	△	JAVAL	3000
		1.7 NM to RW27	
		2000	
		274°	
		1.7 NM	3.6 NM
		5.5 NM	
CATEGORY	A	B	C
LP MDA	880-1	592 (600-1)	NA
LNAV MDA	880-1	592 (600-1)	NA
CIRCLING	880-1	920-1	NA
	591 (600-1)	631 (700-1)	

SE-3, 16 APR 2026 to 14 MAY 2026

SE-3, 16 APR 2026 to 14 MAY 2026